

WEST CHESTER, PENNSYLVANIA

AL-6742 (FAA)

VOR-A

WEST CHESTER/BRANDYWINE (OQN)

VORTAC MXE 113.2 Chan 79	APP CRS 052°	Rwy Idg TDZE Apt Elev	N/A N/A 466
--	------------------------	-----------------------------	--

NA Use Coatesville/Chester County G.O. Carlson altimeter setting.

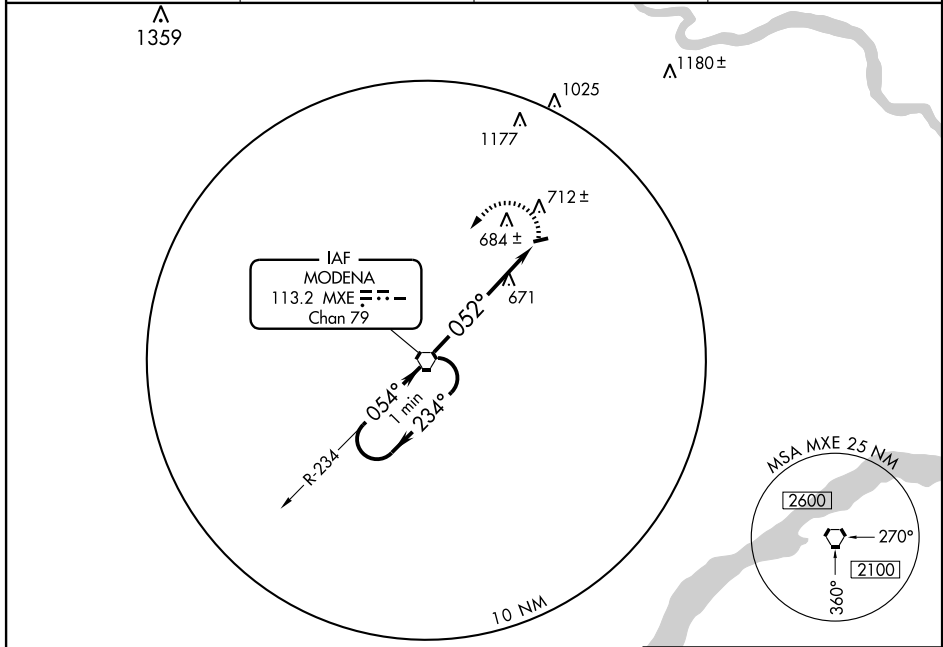
MISSED APPROACH: Climbing left turn to 2000 direct MXE VORTAC and hold.

AWOS-3
121.4

PHILADELPHIA APP CON
124.35 319.15

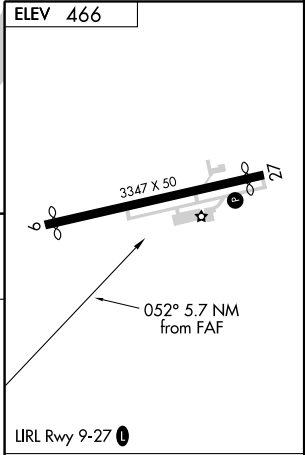
CLNC DEL
125.6

UNICOM
123.075 (CTAF) **1**



NE-4, 22 OCT 2009 to 19 NOV 2009

NE-4, 22 OCT 2009 to 19 NOV 2009



One Minute Holding Pattern	VORTAC	2000	MXE 113.2
2000	← 234°	→ 054°	052°
		5.7 NM	

CATEGORY	A	B	C	D
CIRCLING	1120-1	654 (700-1)		NA

FAF to MAP 5.7 NM					
Knots	60	90	120	150	180
Min:Sec	5:42	3:48	2:51	2:17	1:54

WEST CHESTER, PENNSYLVANIA
Amdt 3 09295

WEST CHESTER/BRANDYWINE (OQN)
VOR-A

39°59'N - 75°35'W