

RNAV (GPS) Y RWY 8

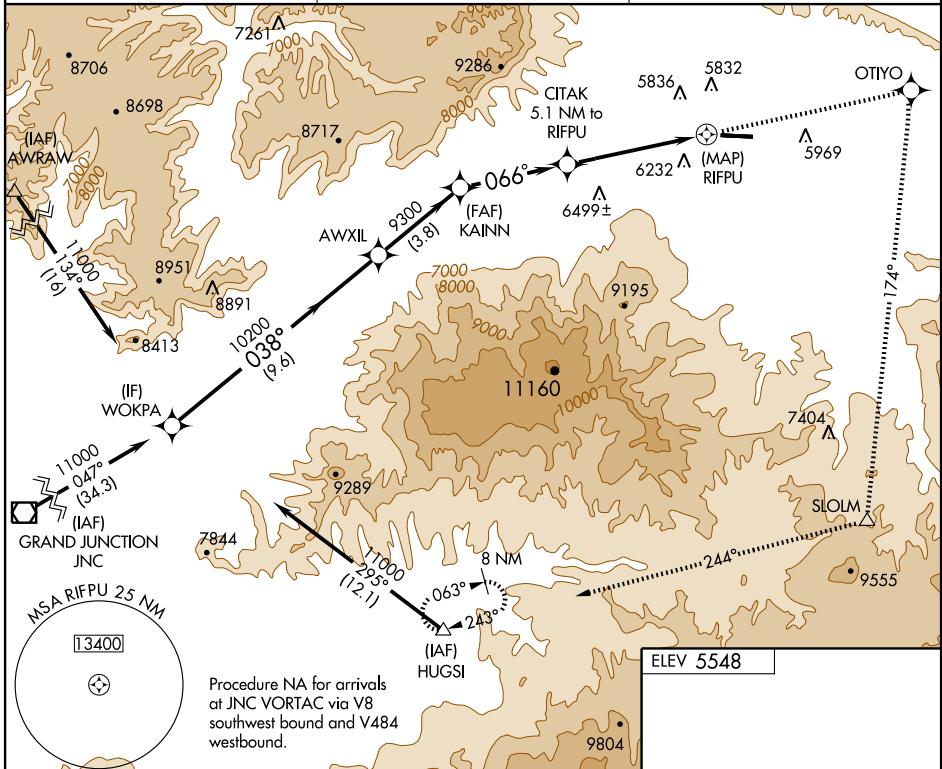
RIFLE/GARFIELD COUNTY RGNL (R.I.L.)

APP CRS	Rwy Idg	7011
066°	TDZE	5498
	Apt Elev	5548

⚠ Circling not authorized at night south of Rwy 8-26.
⚠ Visibility reduction by helicopters NA.
 DME/DME RNP-0.3 NA.

MISSED APPROACH: Climb to 13000 direct OTIYO and via 174° track to SLOLM and via 244° track to HUGSI and hold.

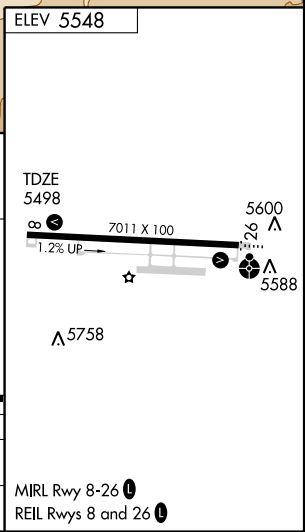
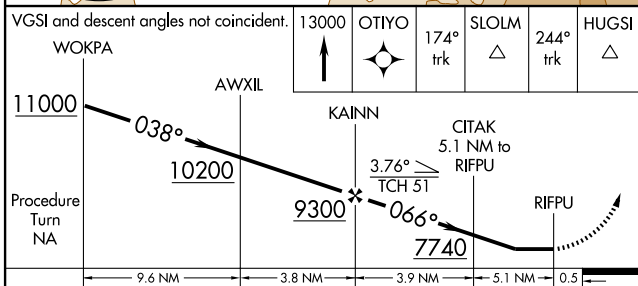
ASOS 135.275	DENVER CENTER 134.5 327.8	UNICOM 122.8 (CTAF) ①
------------------------	-------------------------------------	--



SW-1, 22 OCT 2009 to 19 NOV 2009

SW-1, 22 OCT 2009 to 19 NOV 2009

Procedure NA for arrivals at JNC VORTAC via V8 southwest bound and V484 westbound.



CATEGORY	A	B	C	D
LNVA MDA	7380-1¼ 1882 (1900-1¼)	7380-1½ 1882 (1900-1½)	7380-3 1882 (1900-3)	NA
CIRCLING	7380-1¼ 1832 (1900-1¼)	7380-1½ 1832 (1900-1½)	7380-3 1832 (1900-3)	NA