

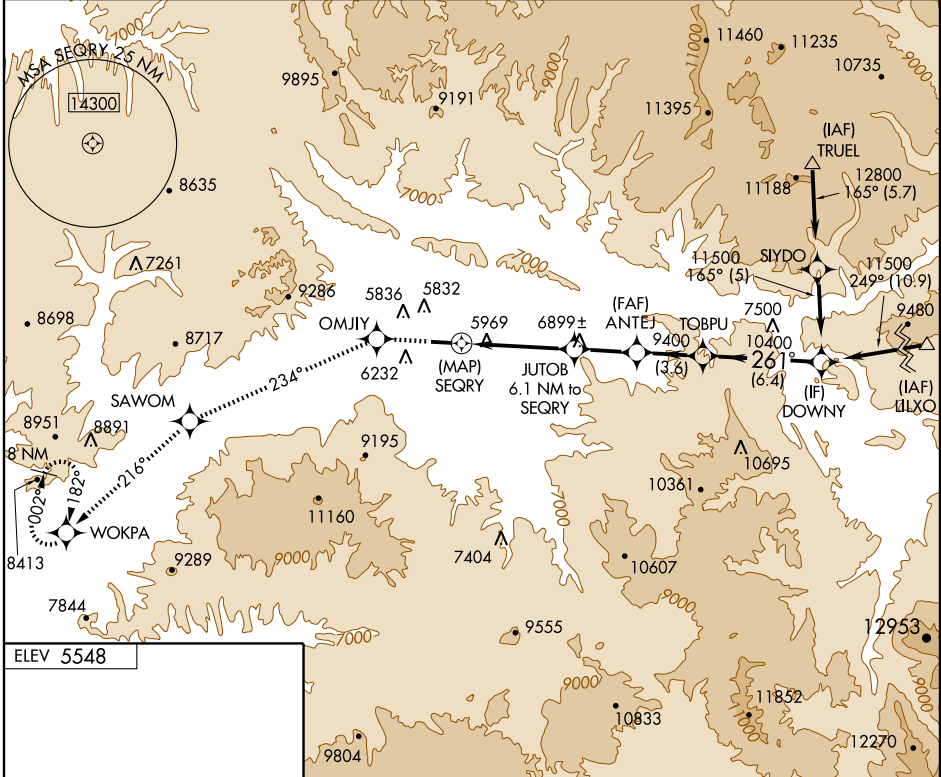
# RNAV (GPS) W RWY 26

RIFLE/GARFIELD COUNTY RGNL (RIFL)

APP CRS	Rwy Idg	<b>7011</b>
<b>261°</b>	TDZE	<b>5548</b>
	Apt Elev	<b>5548</b>

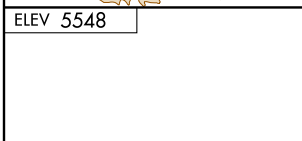
<p><b>⚠</b> Circling not authorized at night south of Rwy 8-26.                  Visibility reduction by helicopters NA.                  DME/DME RNP-0.3 NA.</p>	<p>ODALS</p>	<p>MISSED APPROACH: Climb to 13000 direct OMJIY and via 234° track to SAWOM and via 216° track to WOKPA and hold.</p>
---	--------------	---

ASOS <b>135.275</b>	DENVER CENTER <b>134.5 327.8</b>	UNICOM <b>122.8 (CTAF)</b>
------------------------	-------------------------------------	-------------------------------

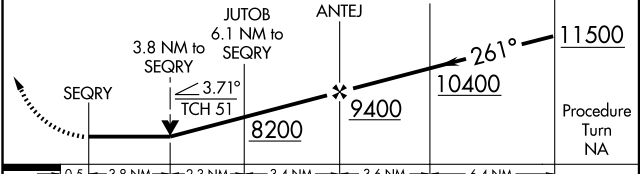


SW-1, 22 OCT 2009 to 19 NOV 2009

SW-1, 22 OCT 2009 to 19 NOV 2009



13000	OMJIY	234° track	SAWOM	216° track	WOKPA	VGSI and descent angles not coincident.
					DOWNY	



	A	B	C	D
CATEGORY	A	B	C	D
LNAV MDA	7180-1¼ 1632 (1700-1¼)	7180-1½ 1632 (1700-1½)	7180-3 1632 (1700-3)	NA
CIRCLING	7180-1¼ 1632 (1700-1¼)	7180-1½ 1632 (1700-1½)	7180-3 1632 (1700-3)	NA