

# LOC/DME-A

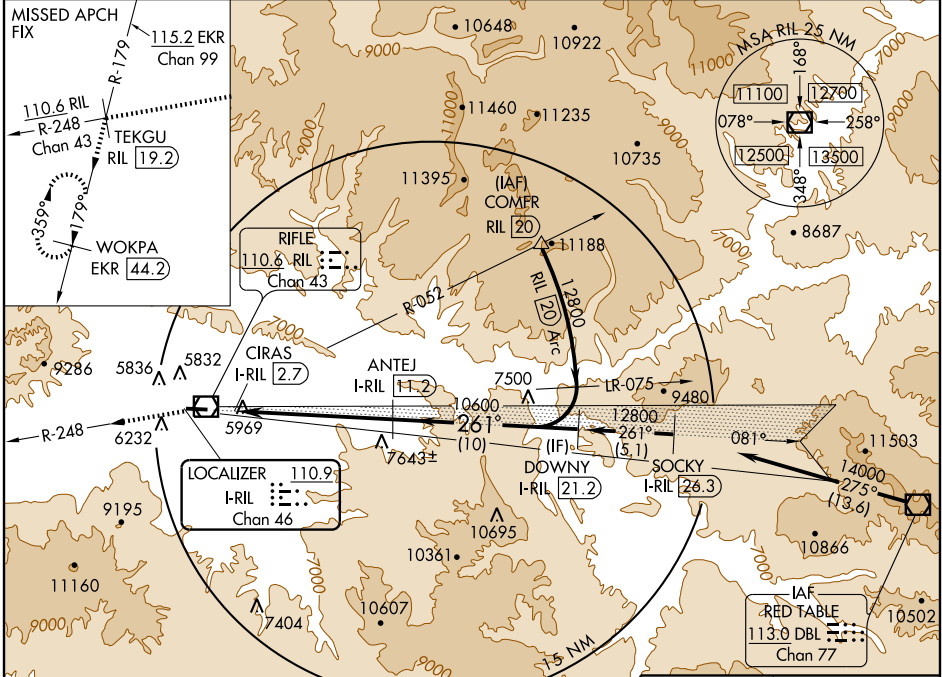
RIFLE/GARFIELD COUNTY RGNL (RIL)

LOC/DME I-RIL <b>110.9</b> Chan 46	APP CRS <b>261°</b>	Rwy Idg TDZE Apt Elev <b>5548</b>	N/A N/A
--	------------------------	---	------------

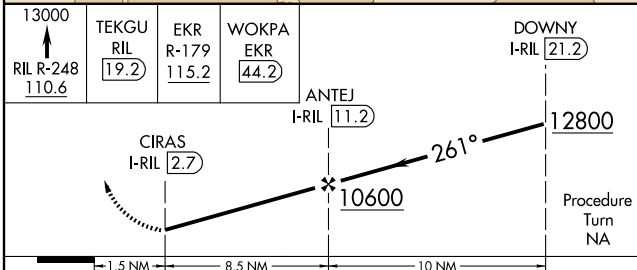
**⚠** Circling not authorized at night south of Rwy 8-26.  
**⚠** Use I-RIL DME when on localizer course.

MISSED APPROACH: Climb to 13000 via RIL VOR/DME R-248 to TEKGU/RIL 19.2 DME and via EKR VOR/DME R-179 to WOKPA/EKR 44.2 DME and hold.

ASOS <b>135.275</b>	DENVER CENTER <b>134.5 327.8</b>	UNICOM <b>122.8 (CTAF)</b>
------------------------	-------------------------------------	-------------------------------



SW-1, 22 OCT 2009 to 19 NOV 2009



CATEGORY	A	B	C	D
CIRCLING	7860-1 $\frac{3}{4}$	2312 (2400-1 $\frac{3}{4}$ )	7860-3 2312 (2400-3)	NA

MIRL Rwy 8-26  
 REIL Rwys 8 and 26