

RNAV (GPS) RWY 22

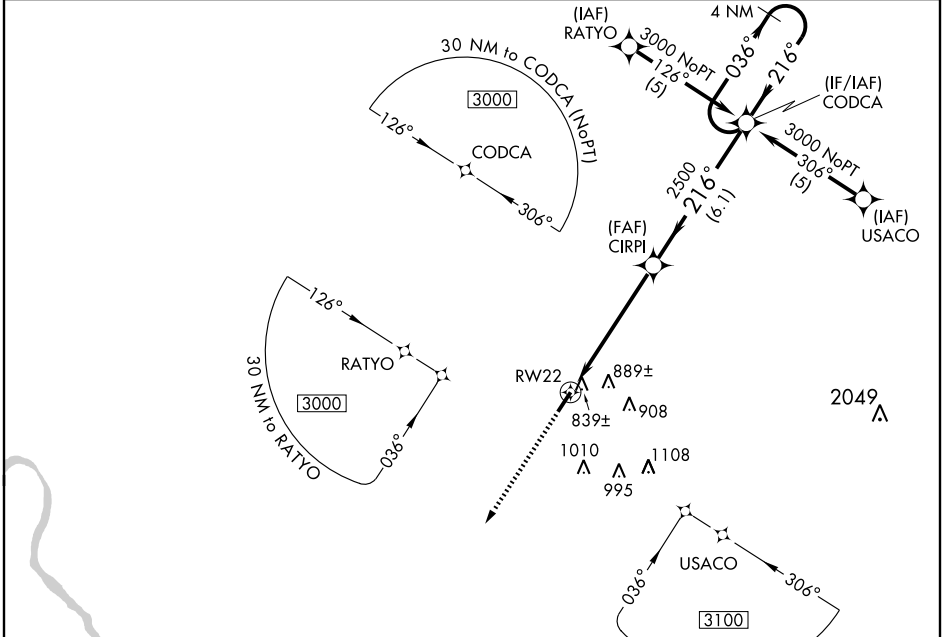
SPRINGFIELD ROBERTSON COUNTY (M91)

APP CRS 216°	Rwy Idg 5005
	TDZE 707
	Apt Elev 707

NA DME/DME RNP-0.3 NA. If local altimeter setting not received, use Nashville Intl altimeter setting and increase all MDAs 80 feet. VDP NA when using Nashville Intl altimeter setting.

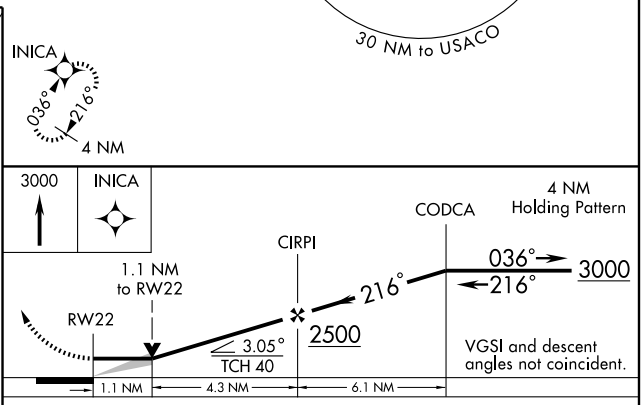
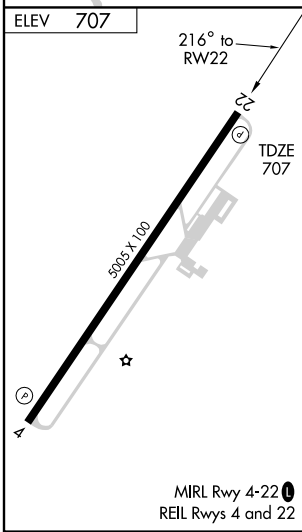
MISSED APPROACH: Climb to 3000 direct INICA and hold.

AWOS-3 120.675	NASHVILLE APP CON 119.35 385.55	GCO 121.725	UNICOM 123.0 (CTAF) 0
--------------------------	---	-----------------------	--



SE-1, 22 OCT 2009 to 19 NOV 2009

SE-1, 22 OCT 2009 to 19 NOV 2009



CATEGORY	A	B	C	D
LNAV MDA	1100-1 393 (400-1)			1100-1½ 393 (400-1½)
CIRCLING	1140-1 433 (500-1)	1240-1 533 (600-1)	1240-1½ 533 (600-1½)	1300-2 593 (600-2)