

# LOC RWY 4

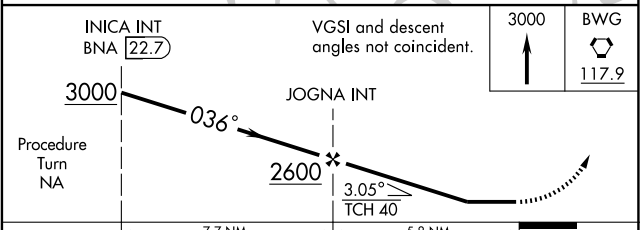
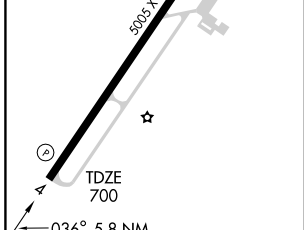
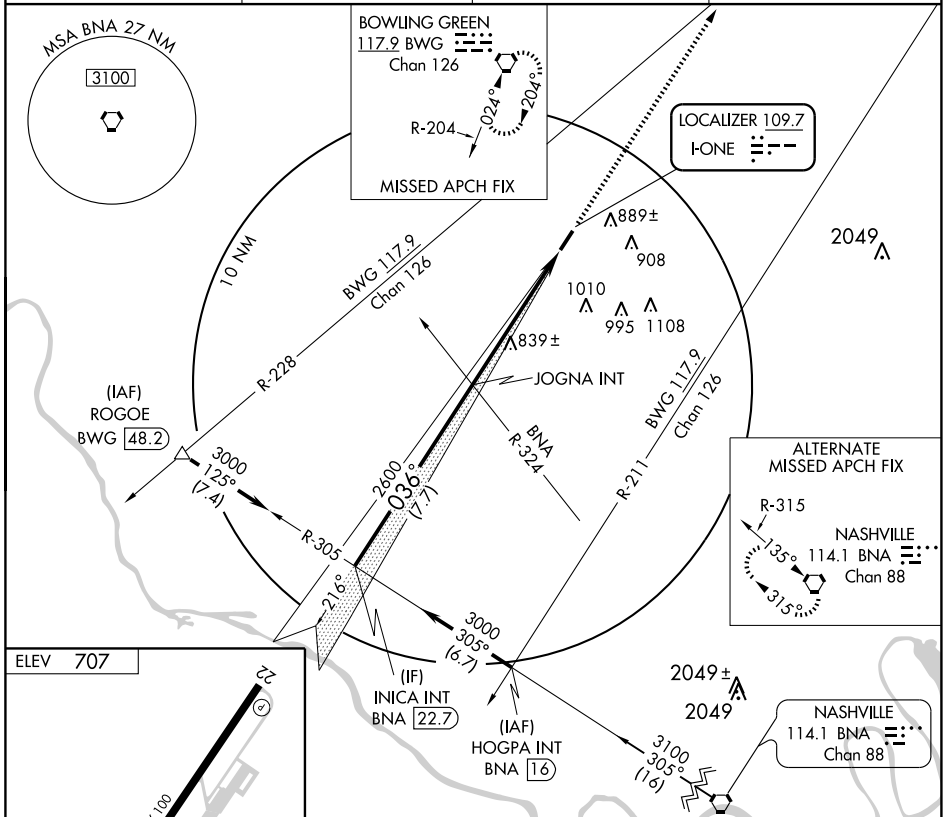
SPRINGFIELD ROBERTSON COUNTY (M91)

LOC I-ONE <b>109.7</b>	APP CRS <b>036°</b>	Rwy Idg <b>5005</b> TDZE <b>700</b> Apt Elev <b>707</b>
---------------------------	------------------------	---

**NA** When local altimeter setting not received, use Nashville Intl altimeter setting and increase all MDA 80 feet and increase S-4 and Circling Cats. C and D visibility ¼ mile. Visibility reduction by helicopters NA.

**MISSED APPROACH:** Climb to 3000 direct BWG VORTAC and hold.

AWOS-3 <b>120.675</b>	NASHVILLE APP CON <b>119.35 385.55</b>	GCO <b>121.725</b>	UNICOM <b>123.0</b> (CTAF) <b>0</b>
--------------------------	---	-----------------------	--



CATEGORY	A	B	C	D
S-4	1100-1	400 (400-1)		1100-1½ 400 (400-1½)
CIRCLING	1140-1 433 (500-1)	1240-1 533 (600-1)	1240-1½ 533 (600-1½)	1300-2 593 (600-2)

# LOC RWY 4

SE-1, 22 OCT 2009 to 19 NOV 2009

SE-1, 22 OCT 2009 to 19 NOV 2009