

CLANTON, ALABAMA

AL-6738 (FAA)

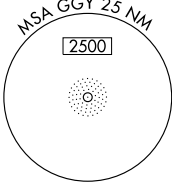
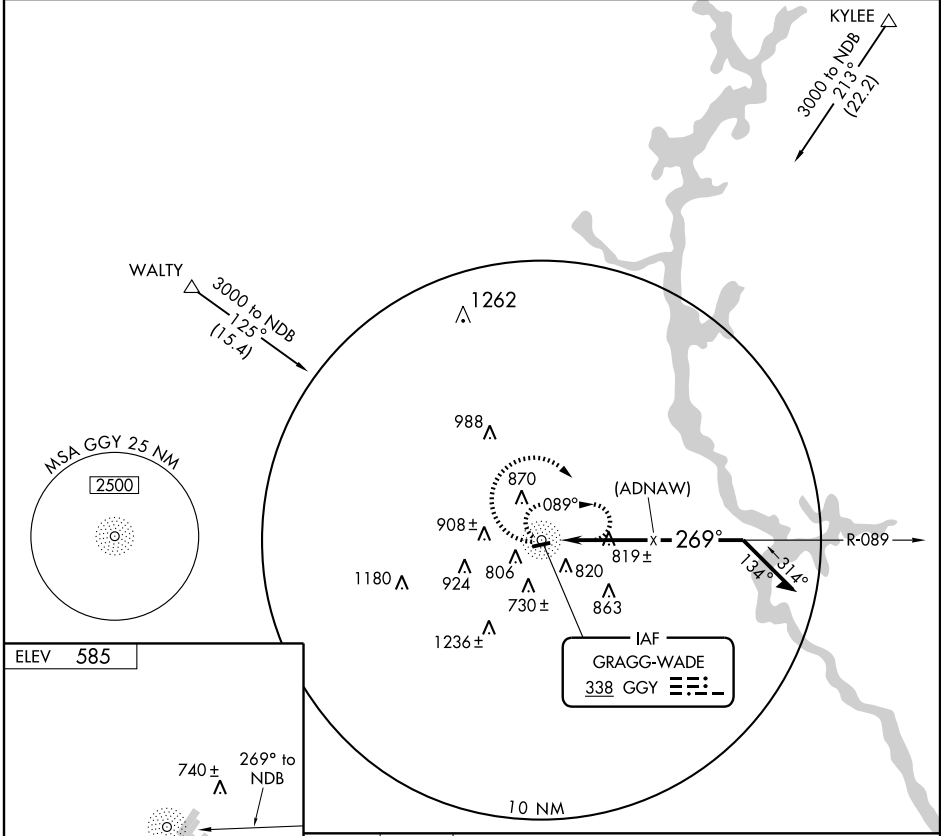
# NDB or GPS RWY 26

CLANTON/ GRAGG-WADE FIELD (02A)

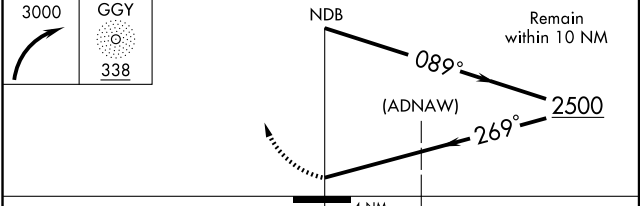
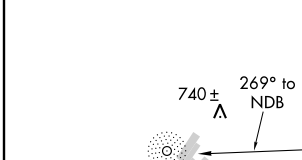
NDB GGY	APP CRS	Rwy Idg	<b>4008</b>
<b>338</b>	<b>269°</b>	TDZE	<b>585</b>
		Apt Elev	<b>585</b>

<p>▼ Use Montgomery altimeter setting.</p> <p>▲ NA</p>	<p>MISSED APPROACH: Climbing right turn to 3000 in GGY NDB holding pattern.</p>
--	---

<p>MONTGOMERY APP CON *</p> <p><b>121.2 380.225</b></p>	<p>UNICOM</p> <p><b>122.8 (CTAF)</b></p>
---	--



ELEV 585



CATEGORY	A	B	C	D
S-26	1320-1	735 (800-1)	1320-2 735 (800-2)	NA
CIRCLING	1320-1	735 (800-1)	1320-2 735 (800-2)	NA

CLANTON, ALABAMA  
Orig 09295

32°51'N - 86°37'W

CLANTON/ GRAGG-WADE FIELD (02A)  
**NDB or GPS RWY 26**

SE-4, 22 OCT 2009 to 19 NOV 2009

SE-4, 22 OCT 2009 to 19 NOV 2009