

LOWELL, INDIANA

AL-6736 (FAA)

# VOR or GPS-A LOWELL (C97)

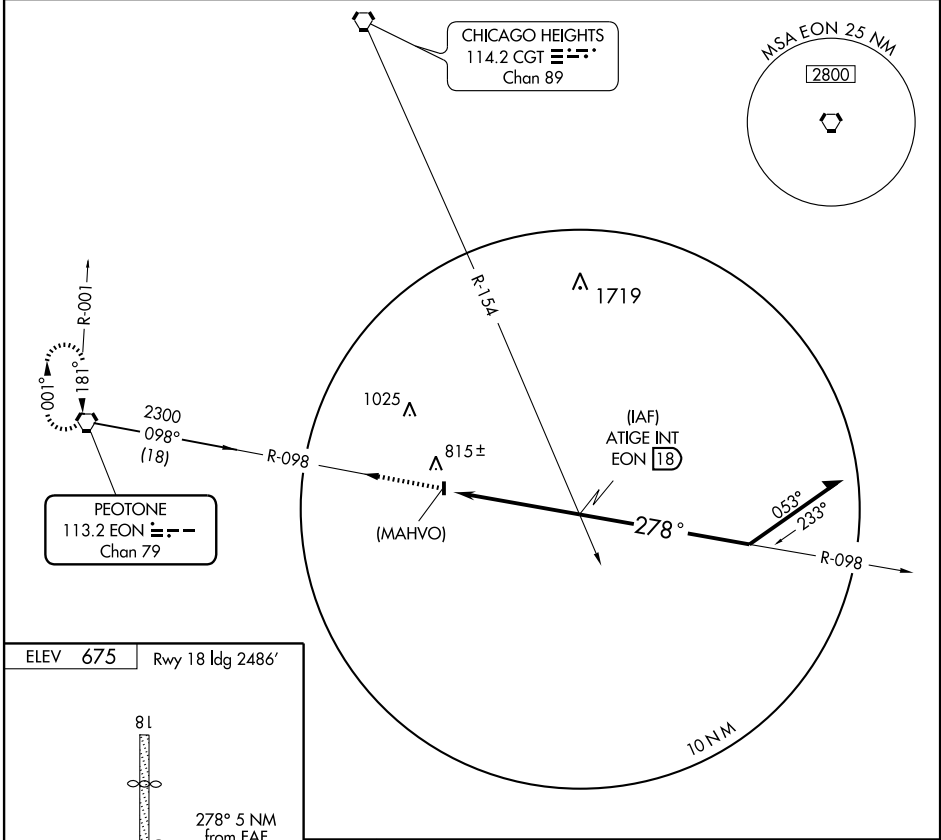
VORTAC EON <b>113.2</b> Chan <b>79</b>	APP CRS <b>278°</b>	Rwy Idg TDZE Apt Elev <b>N/A</b> <b>N/A</b> <b>675</b>
--	------------------------	---

**▼** Use Chicago Midway Intl Airport altimeter setting.  
**▲** NA Procedure not authorized at night except by prior arrangement for runway lights.

MISSED APPROACH: Climb to 3000 direct EON VORTAC and hold.

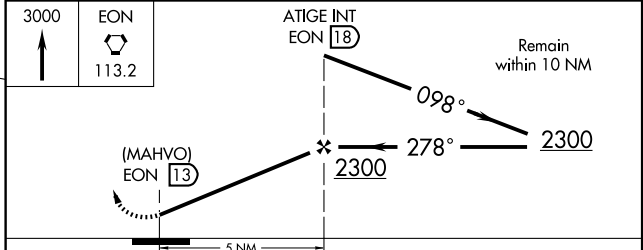
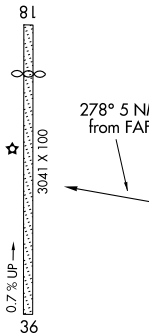
CHICAGO CENTER  
**132.95 272.7**

CTAF  
**122.9**



EC-2, 22 OCT 2009 to 19 NOV 2009

ELEV **675** Rwy 18 ldg 2486'



LOWELL, INDIANA

Orig-A 03023

41°14'N - 87°30'W

# LOWELL (C97) VOR or GPS-A