

GRANT, NEBRASKA

AL-6733 (FAA)

VOR/DME SAE 110.2 Chan 39	APP CRS 162°	Rwy Idg TDZE Apt Elev 4797 3423 3425
---	------------------------	--

VOR/DME RWY 15

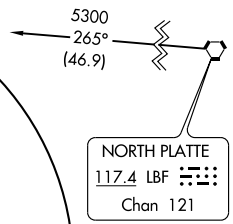
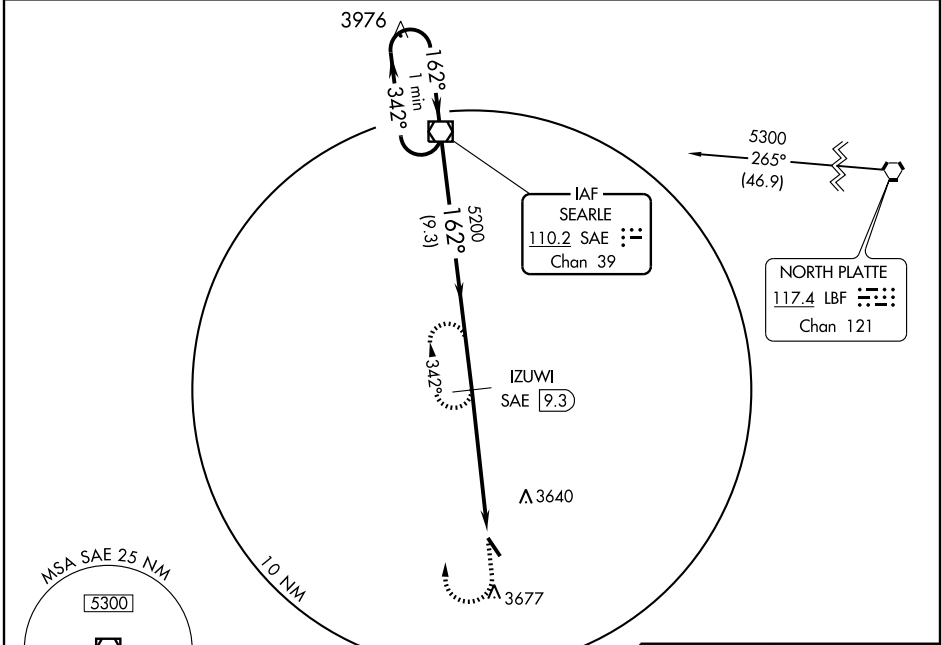
GRANT MUNI (GGF)

NA When local altimeter not received, use Ogallala altimeter setting.

MISSED APPROACH: Climb to 4000 then climbing right turn to 5200 via R-162 to IZUWI and hold.

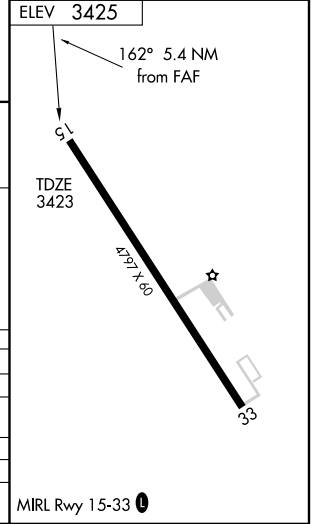
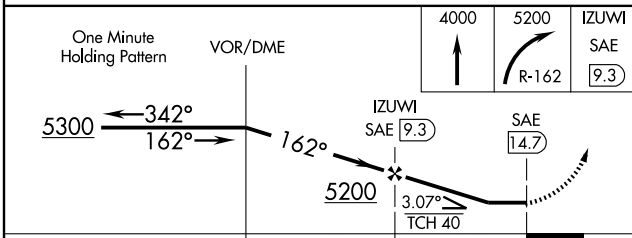
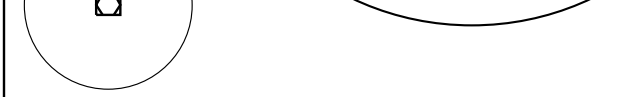
DENVER CENTER **132.7 397.85**

UNICOM **122.8 (CTAF) 0**



NC-2, 22 OCT 2009 to 19 NOV 2009

NC-2, 22 OCT 2009 to 19 NOV 2009



CATEGORY	A	B	C	D
S-15	3940-1	517 (600-1)		NA
CIRCLING	3940-1 515 (600-1)	3980-1 555 (600-1)		NA
OGALLALA ALTIMETER SETTING MINIMUMS				
S-15	4000-1	577 (600-1)		NA
CIRCLING	4000-1 575 (600-1)	4040-1 615 (700-1)		NA

GRANT, NEBRASKA
Orig-B 08353

40° 52' N-101° 44' W

GRANT MUNI (GGF)
VOR/DME RWY 15