

GRANT, NEBRASKA

AL-6733 (FAA)

RNAV (GPS) RWY 33

GRANT MUNI (GGF)

WAAS CH 62908 W33A	APP CRS 317°	Rwy Idg 4797 TDZE 3425 Apt Elev 3425
--	------------------------	---

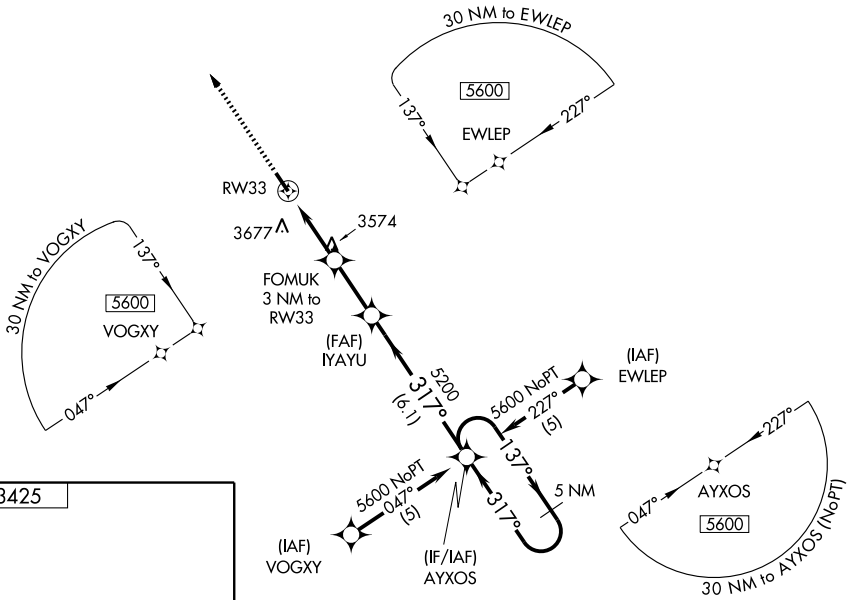
▽ DME/DME RNP-0.3 NA. When local altimeter setting not received, use Ogallala altimeter setting and increase all DA/MDA 60 feet and LPV all Cats visibility 1/4 mile. VDP NA when using Ogallala altimeter setting.

MISSED APPROACH: Climb to 5600 direct AHJUJ and hold.

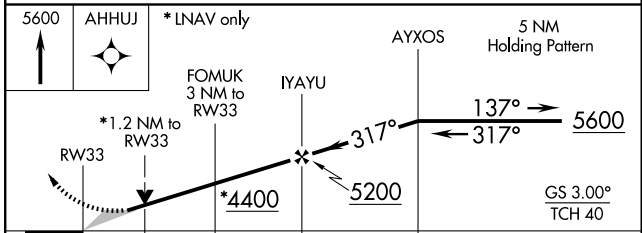
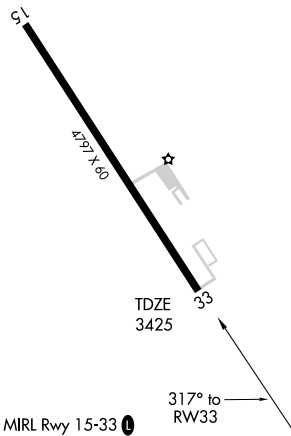
DENVER CENTER
132.7 397.85

UNICOM
122.8 (CTAF) 0

4057 **△**



ELEV 3425



CATEGORY	A	B	C	D
LPV DA	3710-1	285 (300-1)		NA
LNVA MDA	3840-1	415 (500-1)		NA
CIRCLING	3900-1 475 (500-1)	3980-1 555 (600-1)		NA

GRANT, NEBRASKA
Amdt 1 08213

40°52'N-101°44'W

GRANT MUNI (GGF) RNAV (GPS) RWY 33

NC-2, 22 OCT 2009 to 19 NOV 2009

NC-2, 22 OCT 2009 to 19 NOV 2009