

# RNAV (GPS) RWY 15

GRANT MUNI (GGF)

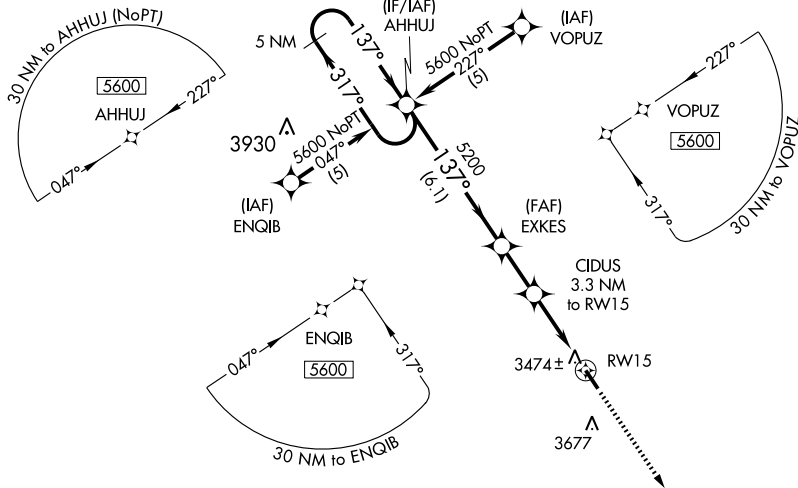
WAAS CH <b>81908</b> W15A	APP CRS <b>137°</b>	Rwy Idg <b>4797</b> TDZE <b>3423</b> Apt Elev <b>3425</b>
---------------------------------	------------------------	---

**▼** For uncompensated Baro-VNAV systems, LNAV/VNAV NA below -21°C (-5°F) or above 54°C (130°F). DME/DME RNP-0.3 NA. When local altimeter setting not received, use Ogallala altimeter setting and increase all DA/MDA 60 feet and LNAV/VNAV all Cats visibility ¼ mile. VDP and Baro-VNAV NA when using Ogallala altimeter setting.

**MISSED APPROACH:**  
Climb to 5600 direct  
AYXOS and hold.

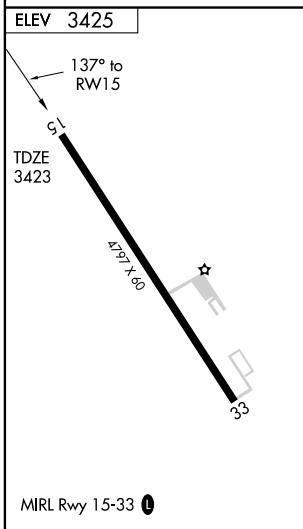
DENVER CENTER  
**132.7 397.85**

UNICOM  
**122.8 (CTAF) 0**



NC-2, 22 OCT 2009 to 19 NOV 2009

NC-2, 22 OCT 2009 to 19 NOV 2009



ELEV 3425	AYXOS 5600	AYXOS		
5 NM Holding Pattern	AHHUJ	*LNAV only		
5600 ← 317°	EXKES	5600		
137° →	CIDUS 3.3 NM to RW15	AYXOS		
GS 3.00°	*4520			
TCH 40	*0.9 NM to RW15			
	6.1 NM	2.1 NM		
		2.4 NM		
		0.9 NM		
TABLE	A	B	C	D
LPV DA	3673-1	250 (300-1)		NA
LNAV/VNAV DA	3833-1½	410 (500-1½)		NA
LNAV MDA	3740-1	317 (400-1)		NA
CIRCLING	3900-1	3980-1		NA
	475 (500-1)	555 (600-1)		