

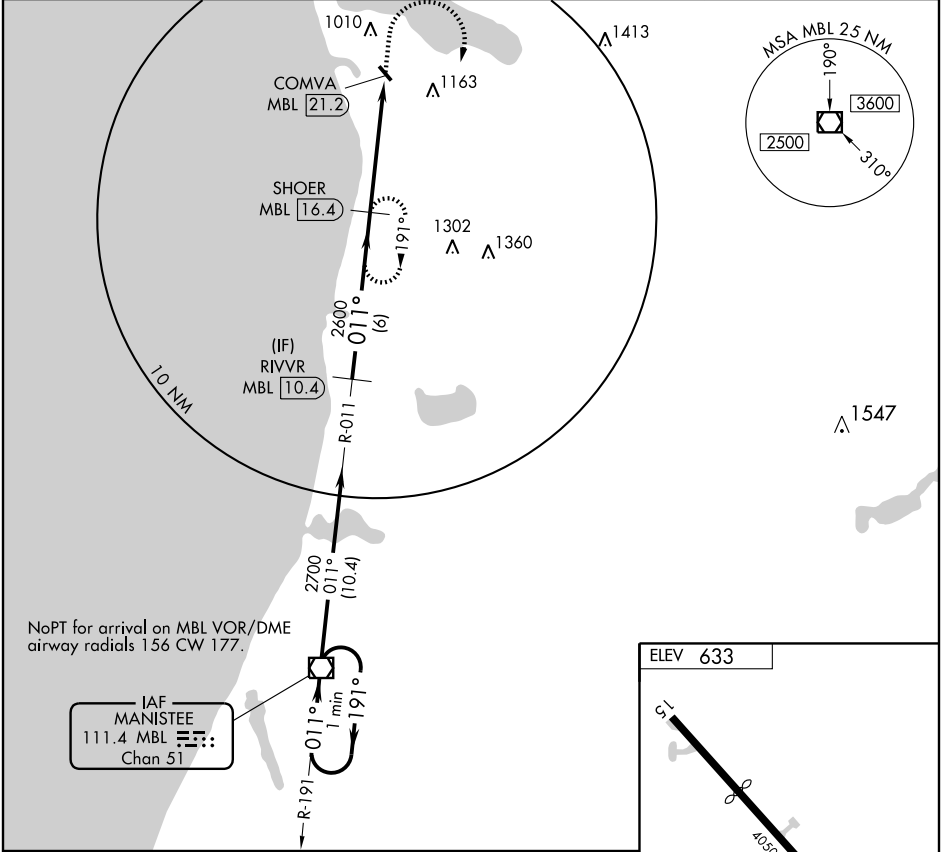
VOR/DME MBL 111.4 Chan 51	APP CRS 011°	Rwy Idg TDZE Apt Elev N/A N/A 633
---	------------------------	---

VOR/DME-A
FRANKFORT DOW MEMORIAL FIELD (F'KS)

⚠ If local altimeter setting not received, use Manistee altimeter setting and increase all MDA's 60 feet.

⚠ MISSED APPROACH: Climb to 2000, then climbing right turn to 2600 via MBL R-011 to SHOER/MBL 16.4 DME and hold.

AWOS-3 118.325	MINNEAPOLIS CENTER 132.9 338.3	GCO 121.725	UNICOM 123.05 (CTAF) Ⓛ
--------------------------	--	-----------------------	---

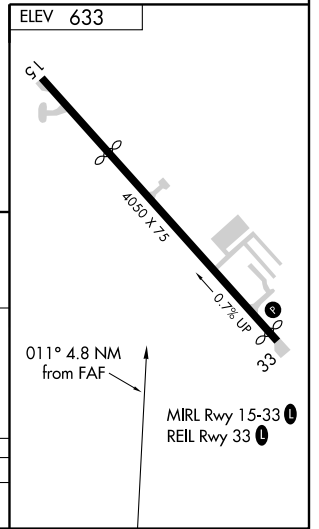


EC-1, 22 OCT 2009 to 19 NOV 2009

EC-1, 22 OCT 2009 to 19 NOV 2009

NoPT for arrival on MBL VOR/DME airway radials 156 CW 177.

IAF
MANISTEE
111.4 MBL Chan 51



One Minute Holding Pattern	VOR/DME	RIVVR MBL 10.4	SHOER MBL 16.4	COMVA MBL 21.2
	2700 ← 191°	2700 → 011°	2600	
		10.4	6 NM	4.8 NM
		2000	2600	SHOER MBL 16.4
			MBL R-011 111.4	

CATEGORY	A	B	C	D
CIRCLING	1480-1 847 (900-1)	1480-1¼ 847 (900-1¼)	1520-2¾ 887 (900-2¾)	NA