

RNAV (GPS) RWY 17

MEDFORD MUNI (O53)

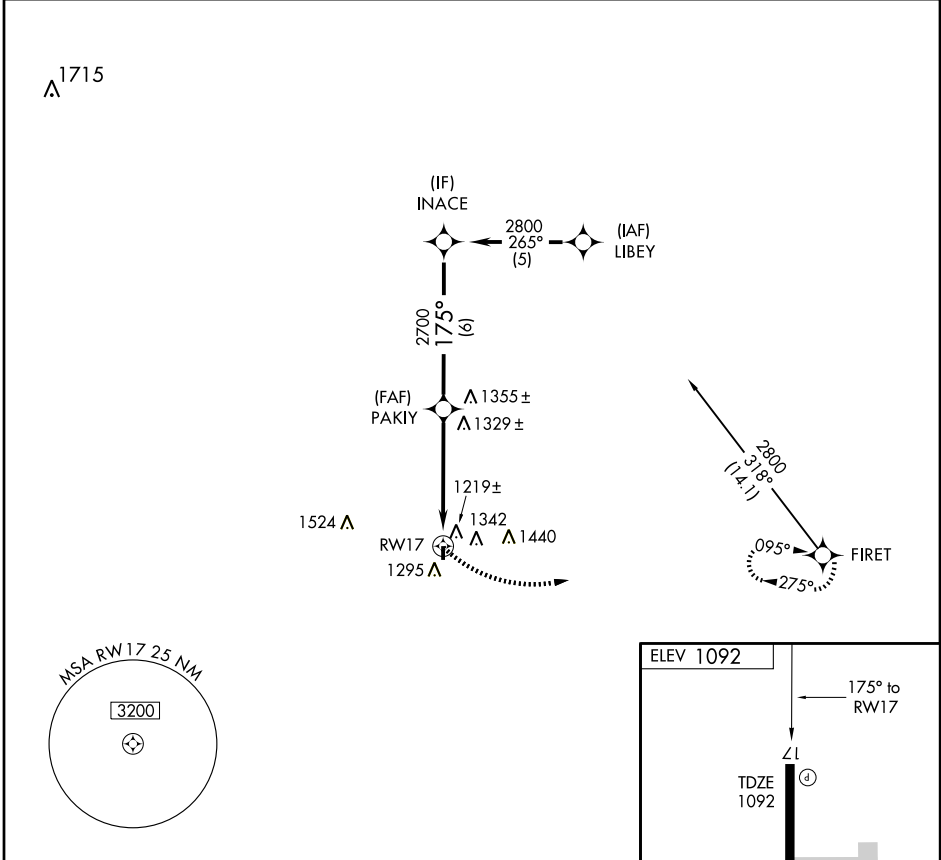
APP CRS 175°	Rwy Idg 3007
	TDZE 1092
	Apt Elev 1092

▲ NA Use Ponca City Rgnl altimeter setting. Procedure NA at night. GPS or RNP-0.3 Required. DME/DME RNP-0.3 NA.

MISSED APPROACH: Climbing left turn to 5000 direct FIRET and hold.

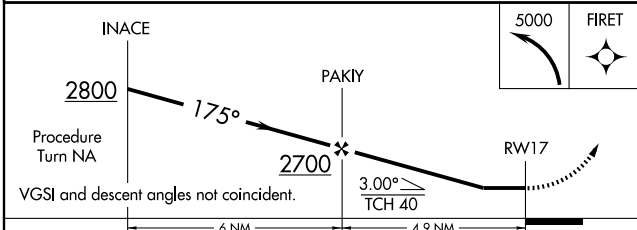
VANCE APP CON*
118.075 273.475

UNICOM
122.8(CTAF)



SC-1, 22 OCT 2009 to 19 NOV 2009

SC-1, 22 OCT 2009 to 19 NOV 2009



CATEGORY	A	B	C	D
LNVA MDA	1680-1 ¼	588 (600-1 ¼)		NA
CIRCLING	1740-1 ¼	648 (700-1 ¼)		NA

