

# NDB or GPS RWY 1

LITTLEFIELD MUNI (LIU)

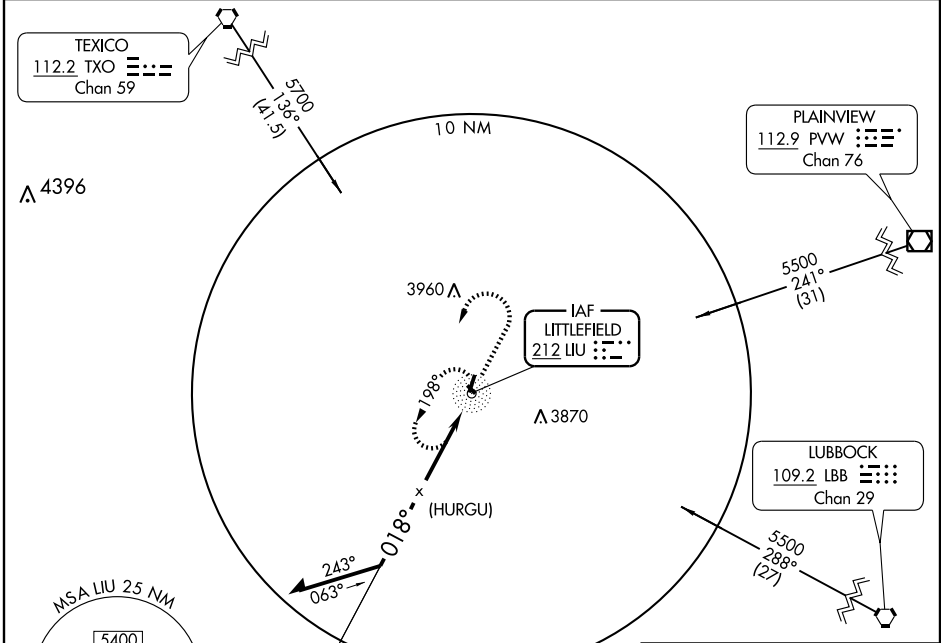
NDB LIU <b>212</b>	APP CRS <b>018°</b>	Rwy Idg <b>4021</b>
		TDZE <b>3614</b>
		Apt Elev <b>3614</b>

**NA** Use Lubbock altimeter setting.

**MISSED APPROACH:** Climb to 5500, then left turn direct LIU NDB and hold.

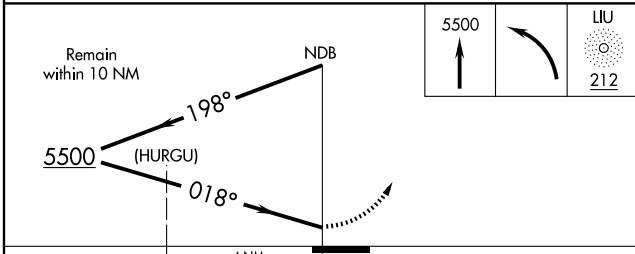
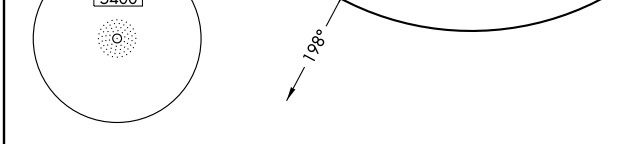
LUBBOCK APP CON  
**119.9 335.6**

UNICOM  
**122.8 (CTAF)**

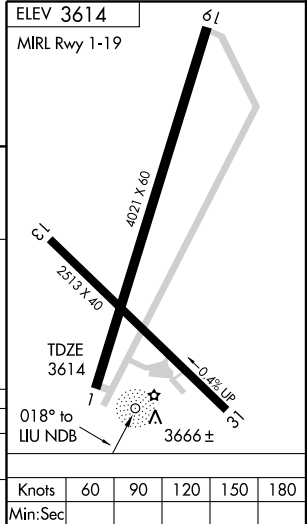


SC-2, 22 OCT 2009 to 19 NOV 2009

SC-2, 22 OCT 2009 to 19 NOV 2009



CATEGORY	A	B	C	D
S-1	4160-1	546 (600-1)	4160-1½ 546 (600-1½)	NA
CIRCLING	4160-1	546 (600-1)	4160-1½ 546 (600-1½)	NA



Knots	60	90	120	150	180
Min:Sec					