

LAMAR, MISSOURI

AL-6725 (FAA)

NDB RWY 3

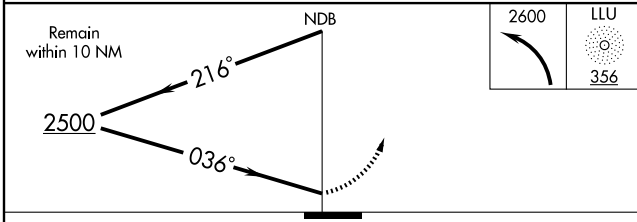
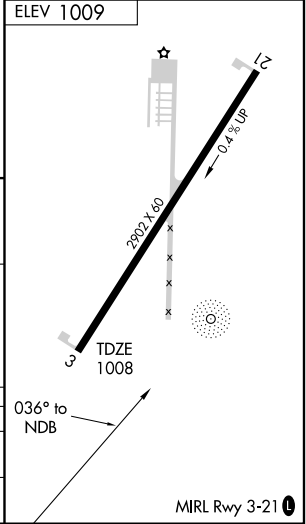
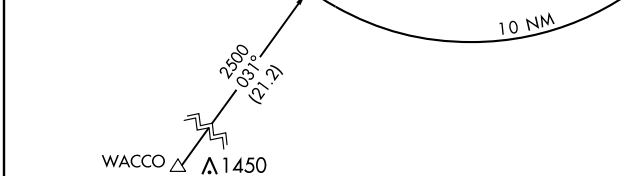
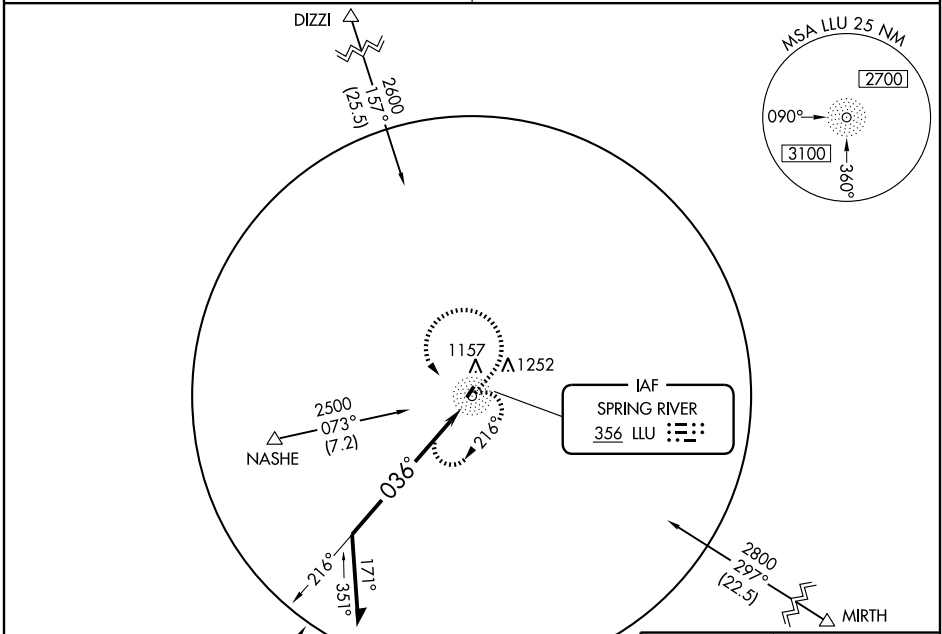
LAMAR MUNI (LLU)

NDB LLU	APP CRS	Rwy Idg	2902
356	036°	TDZE	1008
		Apt Elev	1009

⚠ NA Circling to Rwy 21 NA at night. Visibility reduction by helicopters NA. Use Joplin altimeter setting; when not received, use Springfield altimeter setting and increase all MDAs 100 feet, visibility S-3 Cat. C ¼ mile, Circling Cat. B ¼ mile and Cat. C ½ mile.

MISSED APPROACH: Climbing left turn to 2600 in LLU NDB holding pattern.

KANSAS CITY CENTER 128.6 282.325	CTAF 122.9
--	----------------------



CATEGORY	A	B	C	D
S-3	1640-1	632 (700-1)	1640-1¾ 632 (700-1¾)	NA
CIRCLING	1640-1 631 (700-1)	1660-1 651 (700-1)	1660-1¾ 651 (700-1¾)	NA

LAMAR, MISSOURI
Amdt 1 09071

37°29'N-94°19'W

LAMAR MUNI (LLU) NDB RWY 3

NC-3, 22 OCT 2009 to 19 NOV 2009

NC-3, 22 OCT 2009 to 19 NOV 2009