

ELIOT, MAINE

AL-6723 (FAA)

VOR-A

ELIOT/LITTLEBROOK AIR PARK (3B4)

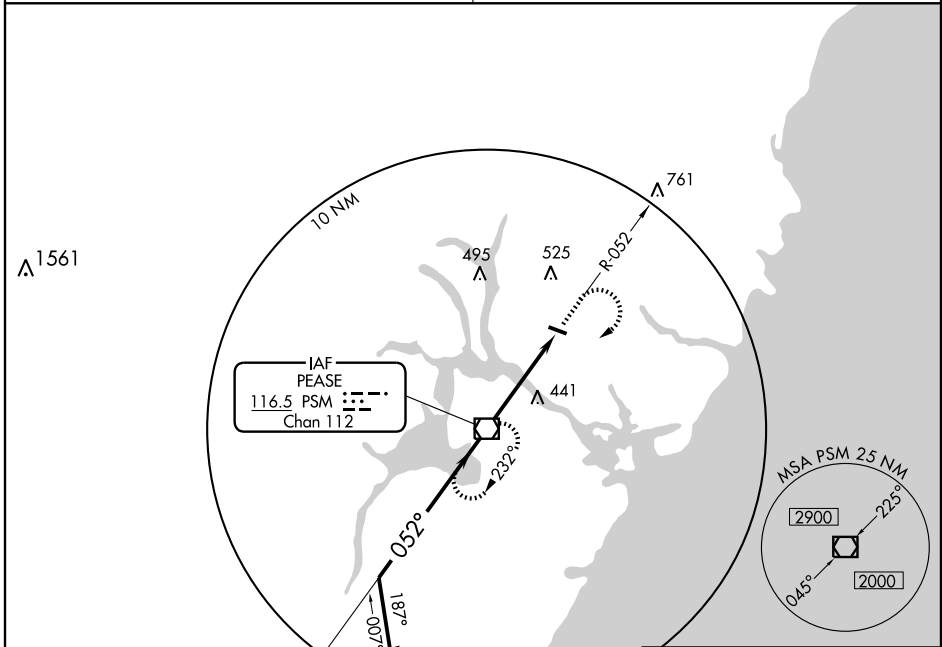
VOR/DME PSM <b>116.5</b> Chan <b>112</b>	APP CRS <b>052°</b>	Rwy Idg TDZE Apt Elev <b>N/A</b> <b>N/A</b> <b>125</b>
--	------------------------	---

▼ Use Portsmouth, NH altimeter setting.  
▲ NA Procedure NA at night.

MISSED APPROACH: Climb to 2000 via PSM R-052 then climbing right turn to 3000 direct PSM VOR/DME and hold.

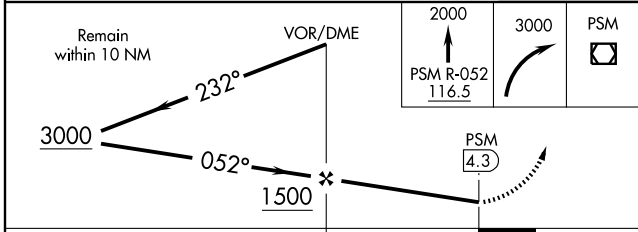
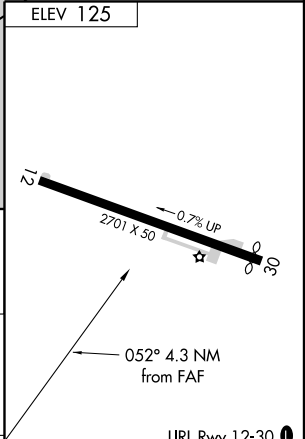
BOSTON APP CON  
**125.05 269.4**

UNICOM  
**122.9 (CTAF)**



NE-1, 22 OCT 2009 to 19 NOV 2009

NE-1, 22 OCT 2009 to 19 NOV 2009



CATEGORY	A	B	C	D	FAF to MAP 4.3 NM					
CIRCLING	720-1	595 (600-1)	NA		Knots	60	90	120	150	180
					Min:Sec	4:18	2:52	2:09	1:43	1:26

ELIOT, MAINE  
Amdt 2 09015

43°09'N-70°46'W

ELIOT/LITTLEBROOK AIR PARK (3B4)

VOR-A