

ELIOT, MAINE

AL-6723 (FAA)

RNAV (GPS) RWY 30

ELIOT/LITTLEBROOK AIR PARK (3B4)

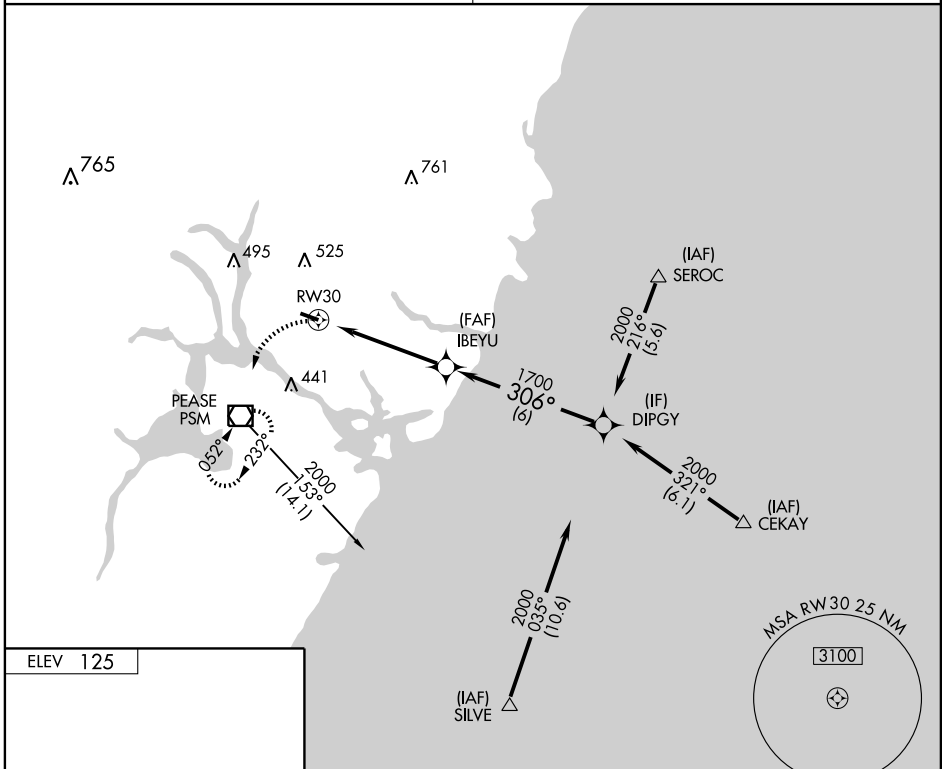
APP CRS	Rwy Idg	2615
306°	TDZE	125
	Apt Elev	125

▼ Procedure NA at night.
 Use Portsmouth, NH. altimeter setting.
▲ NA GPS or RNP-0.3 required. DME/DME RNP-0.3 NA.

MISSED APPROACH: Climbing left turn to 2000 direct PSM VOR/DME and hold.

BOSTON APP CON
125.05 269.4

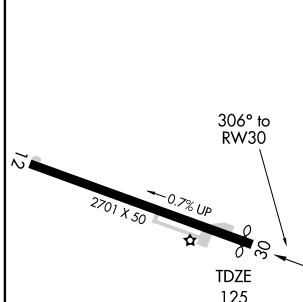
UNICOM
122.9 (CTAF) ①



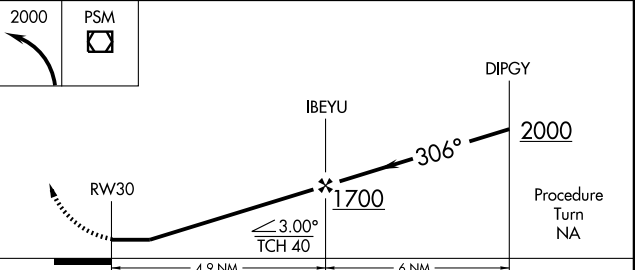
NE-1, 22 OCT 2009 to 19 NOV 2009

NE-1, 22 OCT 2009 to 19 NOV 2009

ELEV 125



Procedure NA for arrival at SILVE WP on V139 southbound, at SEROC on V167 northbound, and at CEKAY on V167 southbound.



CATEGORY	A	B	C	D
LNAV MDA	580-1	455 (500-1)		NA
CIRCLING	680-1	555 (600-1)		NA

ELIOT, MAINE
 Orig 09015

43°09'N-70°46'W

ELIOT/LITTLEBROOK AIR PARK (3B4)

RNAV (GPS) RWY 30