

BONHAM, TEXAS

AL-6722 (FAA)

RNAV (GPS) RWY 35

BONHAM/ JONES FIELD (F00)

APP CRS 356°	Rwy Idg 4000
	TDZE 618
	Apt Elev 618

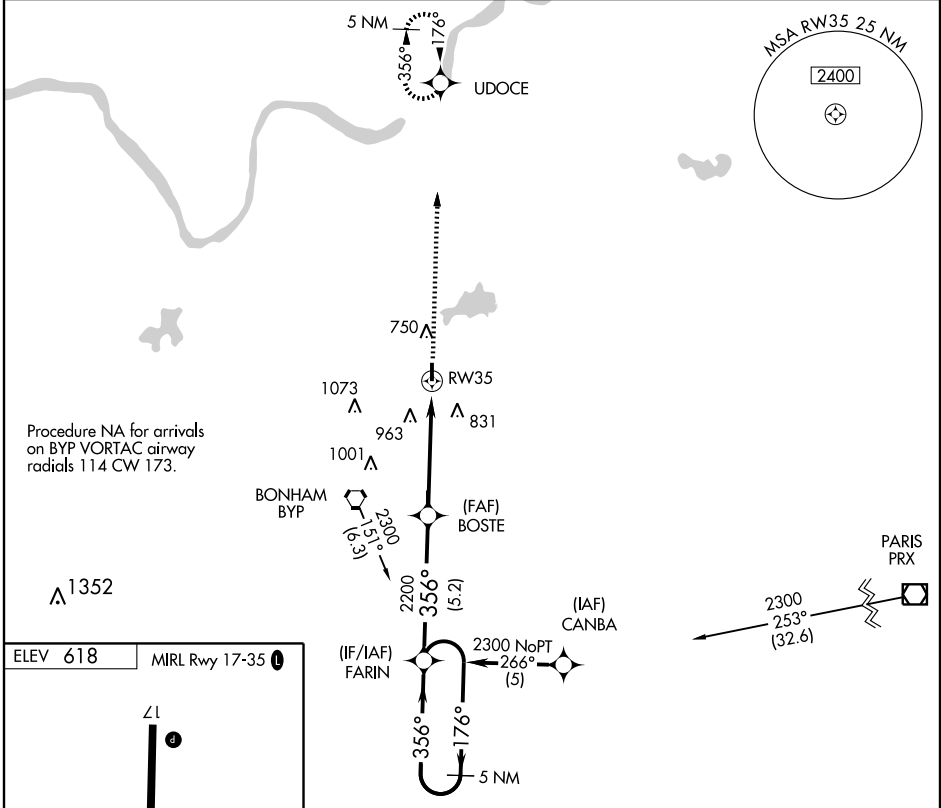
▽ DME/DME RNP-0.3 NA. Visibility reduction by helicopters NA. Use Majors altimeter setting; if not received, use Paris altimeter setting.

△ NA

MISSED APPROACH: Climb to 2500 direct UDOCE and hold.

FORT WORTH CENTER
127.6 254.3

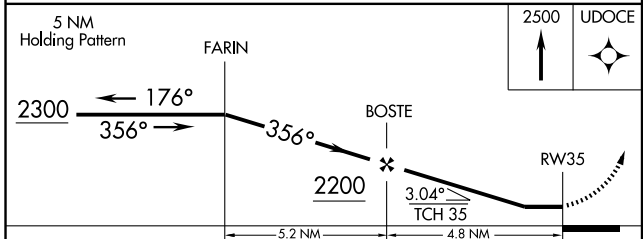
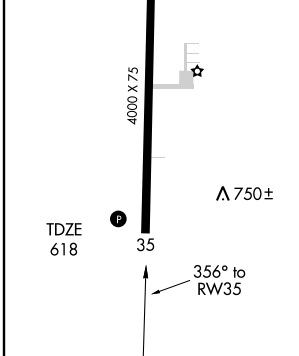
UNICOM
122.8 (CTAF) 1



Procedure NA for arrivals on BYP VORTAC airway radials 114 CW 173.

SC-2, 22 OCT 2009 to 19 NOV 2009

SC-2, 22 OCT 2009 to 19 NOV 2009



CATEGORY	A	B	C	D
LNAV MDA	1340-1	722 (800-1)		NA
CIRCLING	1340-1	722 (800-1)		NA

BONHAM, TEXAS
Orig 07298

33°37'N-96°11'W

RNAV (GPS) RWY 35

BONHAM/ JONES FIELD (F00)