

GROVE, OKLAHOMA

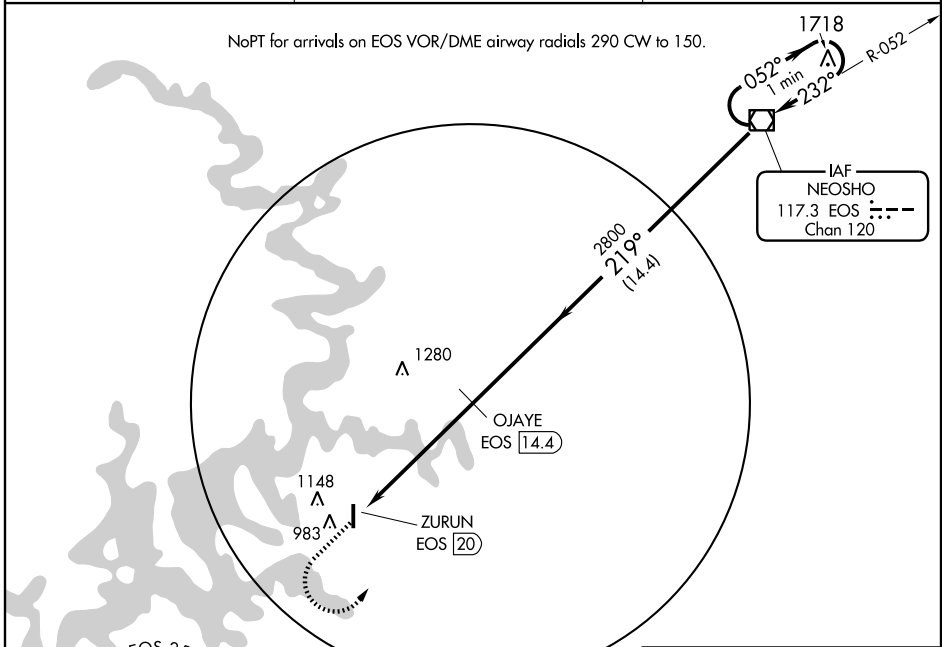
AL-6721 (FAA)

VOR/DME EOS <b>117.3</b> Chan <b>120</b>	APP CRS <b>219°</b>	Rwy Idg TDZE Apt Elev	<b>N/A</b> <b>N/A</b> <b>830</b>
--	------------------------	-----------------------------	--

**VOR/DME-A**  
GROVE MUNI (GMJ)

▼ MISSED APPROACH: Climb to 2000 then climbing left turn to 3000 direct EOS VOR/DME and hold.

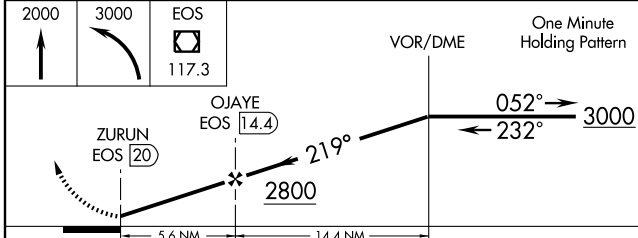
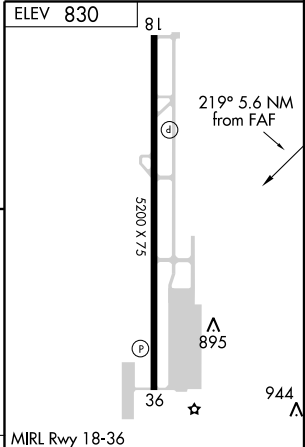
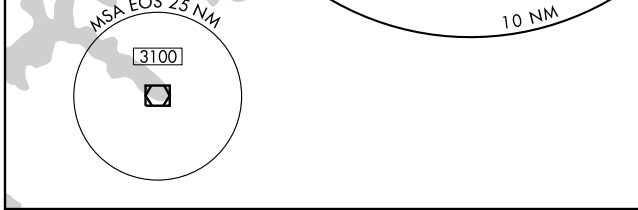
AWOS-3 <b>119.025</b>	KANSAS CITY CENTER <b>128.8 354.1</b>	UNICOM <b>122.8</b> (CTAF)
--------------------------	--	-------------------------------



IAF  
NEOSHO  
117.3 EOS ---  
Chan 120

SC-1, 22 OCT 2009 to 19 NOV 2009

SC-1, 22 OCT 2009 to 19 NOV 2009



CATEGORY	A	B	C	D	Knots	60	90	120	150	180
CIRCLING	1500-1 670 (700-1)	1500-1¼ 670 (700-1¼)	1500-1¾ 670 (700-1¾)	NA	Min:Sec					

GROVE, OKLAHOMA  
Amdt 1 08269

36°36'N-94°44'W

GROVE MUNI (GMJ)  
**VOR/DME-A**