

GROVE, OKLAHOMA

AL-6721 (FAA)

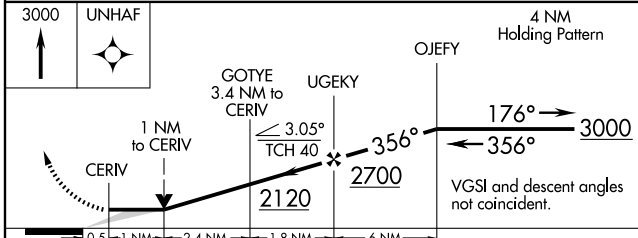
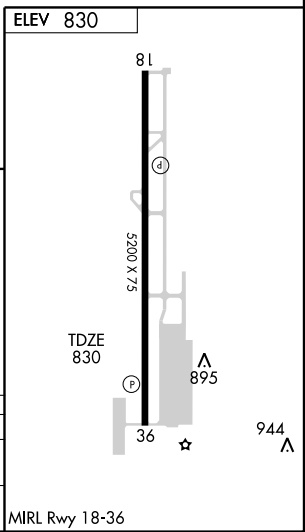
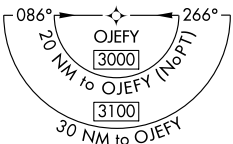
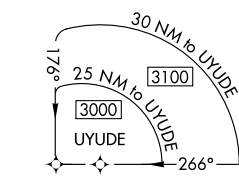
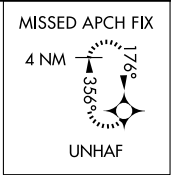
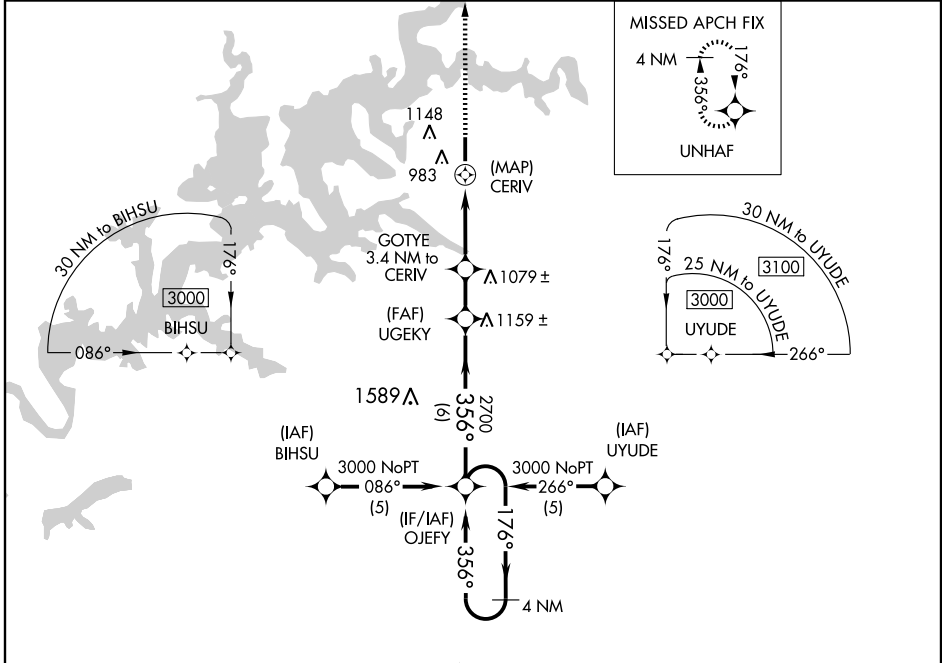
RNAV (GPS) RWY 36

GROVE MUNI (G.M.J)

APP CRS 356°	Rwy Idg 5200
	TDZE 830
	Apt Elev 830

▼ DME/DME RNP-0.3 NA.	MISSED APPROACH: Climb to 3000 direct UNHAF and hold.
------------------------------	---

AWOS-3 119.025	KANSAS CITY CENTER 128.8 354.1	UNICOM 122.8 (CTAF)
--------------------------	--	-------------------------------



CATEGORY	A	B	C	D
RNAV MDA	1280-1	450 (500-1)	1280-1¼ 450 (500-1¼)	NA
CIRCLING	1500-1	670 (700-1)	1500-1¾ 670 (700-1¾)	NA

GROVE, OKLAHOMA
Orig 08325

36°36'N-94°44'W

RNAV (GPS) RWY 36

GROVE MUNI (G.M.J)

SC-1, 22 OCT 2009 to 19 NOV 2009

SC-1, 22 OCT 2009 to 19 NOV 2009