

GROVE, OKLAHOMA

AL-6721 (FAA)

WAAS CH 58308 W18A	APP CRS 176°	Rwy ldg 5200 TDZE 826 Apt Elev 831
--	------------------------	---

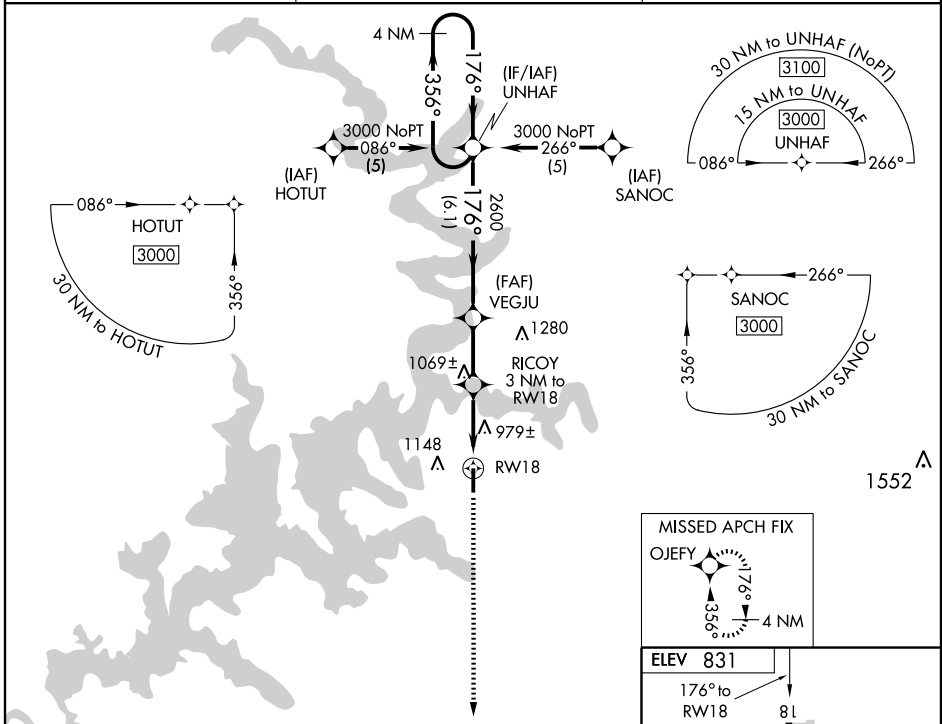
RNAV (GPS) RWY 18

GROVE MUNI (G.M.J)

▼ For uncompensated Baro-VNAV systems, LNAV/VNAV NA below -16°C (4°F) or above 54°C (130°F). DME/DME RNP-0.3 NA. Visibility reduction by helicopters NA.

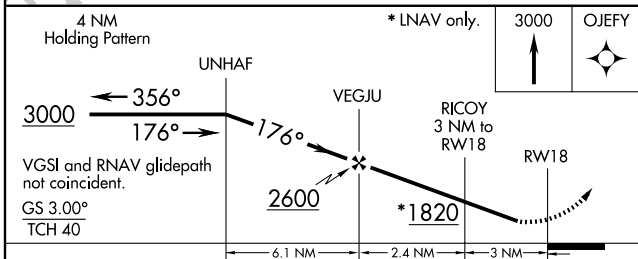
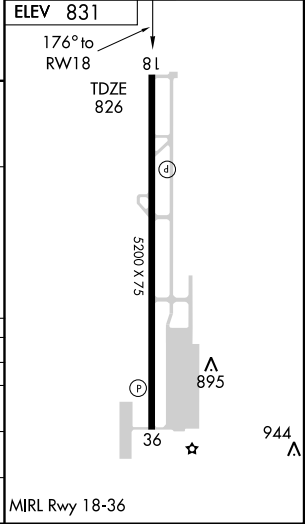
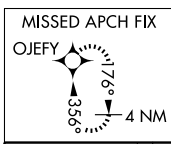
MISSED APPROACH: Climb to 3000 direct OJEFY and hold.

AWOS-3 119.025	KANSAS CITY CENTER 128.8 354.1	UNICOM 122.8 (CTAF)
--------------------------	--	-------------------------------



SC-1, 22 OCT 2009 to 19 NOV 2009

SC-1, 22 OCT 2009 to 19 NOV 2009



CATEGORY	A	B	C	D
LPV DA	1153-1¼	327 (400-1¼)		NA
LNAV/VNAV DA	1346-2	520 (600-2)		NA
LNAV MDA	1240-1 414 (500-1)		1240-1¼ 414 (500-1¼)	NA
CIRCLING	1500-1 669 (700-1)		1500-1¾ 669 (700-1¾)	NA

GROVE, OKLAHOMA
Amdt 1 08269

36°36'N-94°44'W

RNAV (GPS) RWY 18

GROVE MUNI (G.M.J)