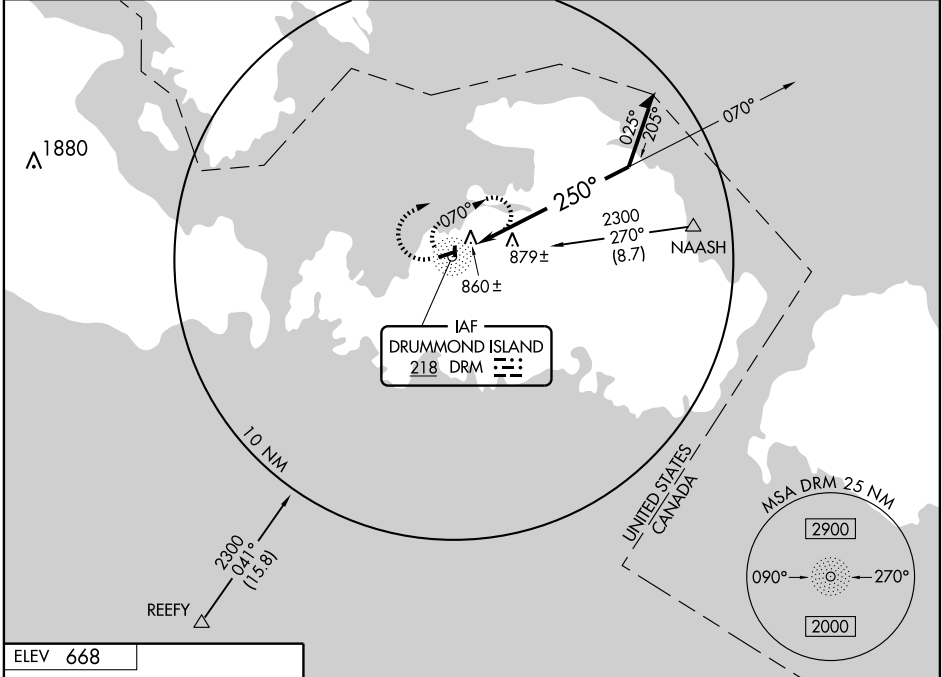


NDB DRM 218	APP CRS 250°	Rwy Idg TDZE Apt Elev	3830 661 668
-----------------------	------------------------	-----------------------------	---

NDB RWY 26
DRUMMOND ISLAND (DRM)

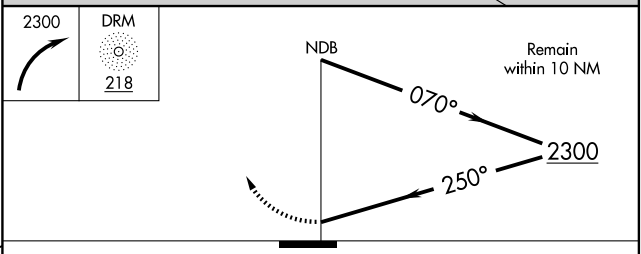
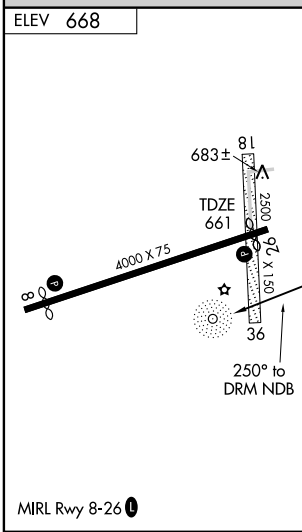
▼ Obtain local altimeter setting on CTAF; when not received, use Saunt Ste Marie Chippewa County Intl altimeter setting.
 ▲ NA MISSED APPROACH: Climbing right turn to 2300 in DRM NDB holding pattern.

AWOS-3 118.325	TORONTO CENTER 132.65 344.5	GCO 121.725	UNICOM 122.8 (CTAF) U
--------------------------	---------------------------------------	-----------------------	--



EC-1, 22 OCT 2009 to 19 NOV 2009

EC-1, 22 OCT 2009 to 19 NOV 2009



CATEGORY	A	B	C	D
S-26	1220-1	559 (600-1)	1220-1½ 559 (600-1½)	NA
CIRCLING	1220-1	552 (600-1)	1220-1½ 552 (600-1½)	NA
SAULT STE MARIE CHIPPEWA CO INTL ALTIMETER MINIMA				
S-26	1320-1	659 (700-1)	1320-1¾ 659 (700-1¾)	NA
CIRCLING	1320-1	652 (700-1)	1320-1¾ 652 (700-1¾)	NA