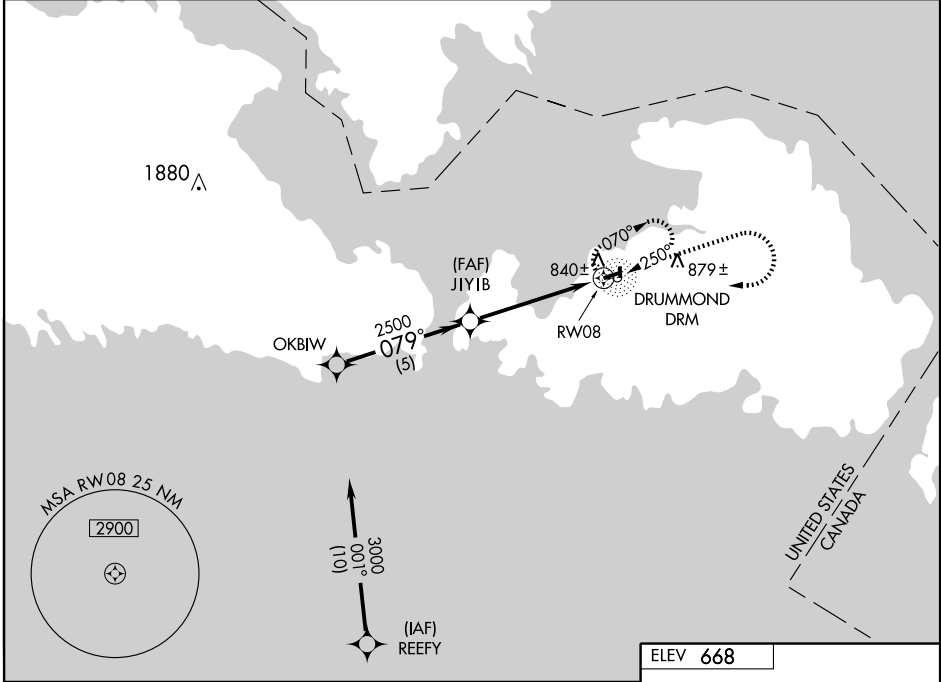


GPS RWY 8 DRUMMOND ISLAND (DRM)

APP CRS 079°	Rwy Idg TDZE Apt Elev	3350 661 668
------------------------	-----------------------------	---

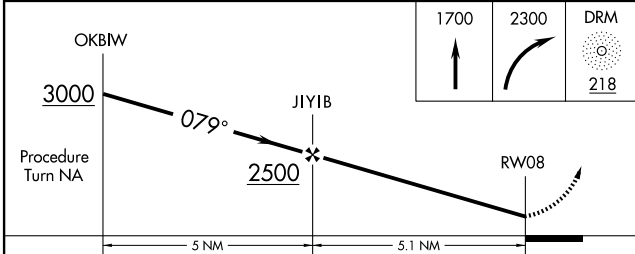
▽ Obtain local altimeter setting on CTAF; when not received, use Sault Ste Marie Chippewa County Intl altimeter setting.
▲ NA MISSED APPROACH: Climb to 1700, then climbing right turn to 2300 direct DRM NDB and hold.

AWOS-3 118.325	TORONTO CENTER 132.65 344.5	GCO 121.725	UNICOM 122.8 (CTAF) 0
--------------------------	---------------------------------------	-----------------------	---------------------------------



EC-1, 22 OCT 2009 to 19 NOV 2009

EC-1, 22 OCT 2009 to 19 NOV 2009



CATEGORY	5 NM		5.1 NM	
	A	B	C	D
S-8	1100-1	439 (500-1)	1100-1¼ 439 (500-1¼)	NA
CIRCLING	1160-1	492 (500-1)	1160-1½ 492 (500-1½)	NA
SAULT STE MARIE CHIPPEWA CO INTL ALTIMETER SETTING MINIMUMS				
S-8	1200-1	539 (600-1)	1200-1½ 539 (600-1½)	NA
CIRCLING	1260-1	592 (600-1)	1260-1½ 592 (600-1½)	NA

