

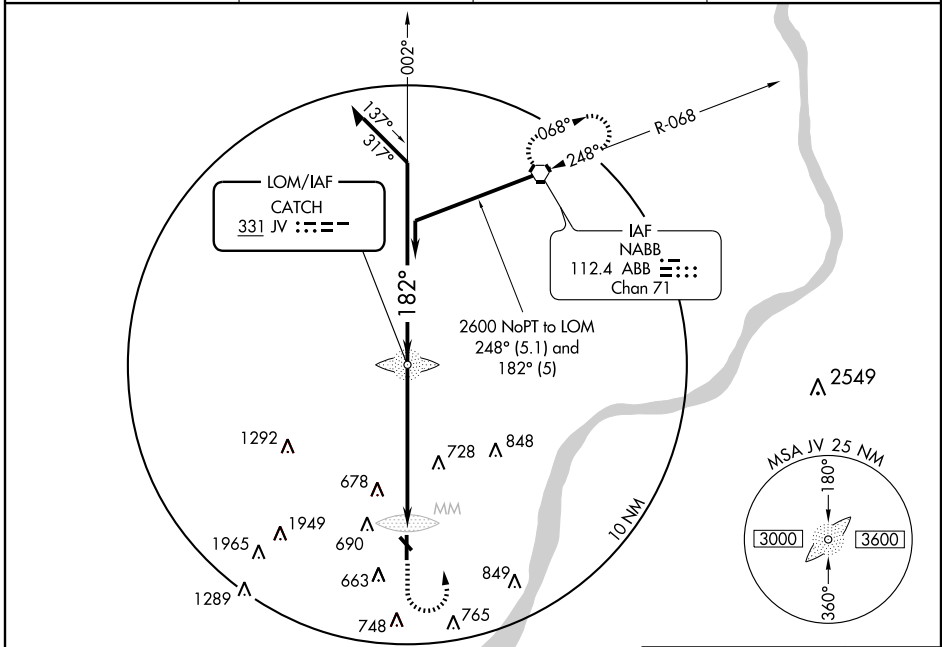
NDB RWY 18

JEFFERSONVILLE / CLARK RGNL (JVY)

LOM JV 331	APP CRS 182°	Rwy Idg 5500
		TDZE 474
		Apt Elev 474

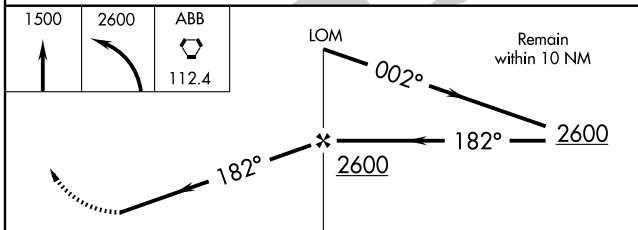
NA Obtain local altimeter on CTAF, when not received, use Louisville/Standford altimeter setting.	MALSR	MISSED APPROACH: Climb to 1500 then climbing left turn to 2600 direct ABB VORTAC and hold.

AWOS-3 118.575	LOUISVILLE APP CON 132.075 327.0	CLNC DEL 118.05	UNICOM 122.7 (CTAF) 0
--------------------------	--	---------------------------	---------------------------------



EC-2, 22 OCT 2009 to 19 NOV 2009

EC-2, 22 OCT 2009 to 19 NOV 2009



CATEGORY	A		B		C		D	
	S-18	1080-¾	606 (700-¾)	1080-1¼	606 (700-1¼)	1080-1¼	606 (700-1¼)	1080-1¼
CIRCLING	1080-1	606 (700-1)	1080-1¾	606 (700-1¾)	1100-2	626 (700-2)	1100-2	626 (700-2)
LOUISVILLE/STANDFORD ALTIMETER SETTING MINIMUMS								
S-18	1100-¾	626 (700-¾)	1100-1¼	626 (700-1¼)	1100-1¾	626 (700-1¾)	1100-1¾	626 (700-1¾)
CIRCLING	1100-1	626 (700-1)	1100-1¾	626 (700-1¾)	1140-2	666 (700-2)	1140-2	666 (700-2)

ELEV 474	AS	81	TDZE 474
182° 6.1 NM from FAF	3899 X 75	5500 X 100	36
REIL Rwy 14, 32	REIL Rwy 18, 36	MIRL Rwy 14-32, 18-36	36
FAF to MAP 6.1 NM			
Knots	60	90	120 150 180
Min:Sec	6:06	4:04	3:03 2:26 2:02