

ILS or LOC RWY 18

JEFFERSONVILLE / CLARK RGNL (JVY)

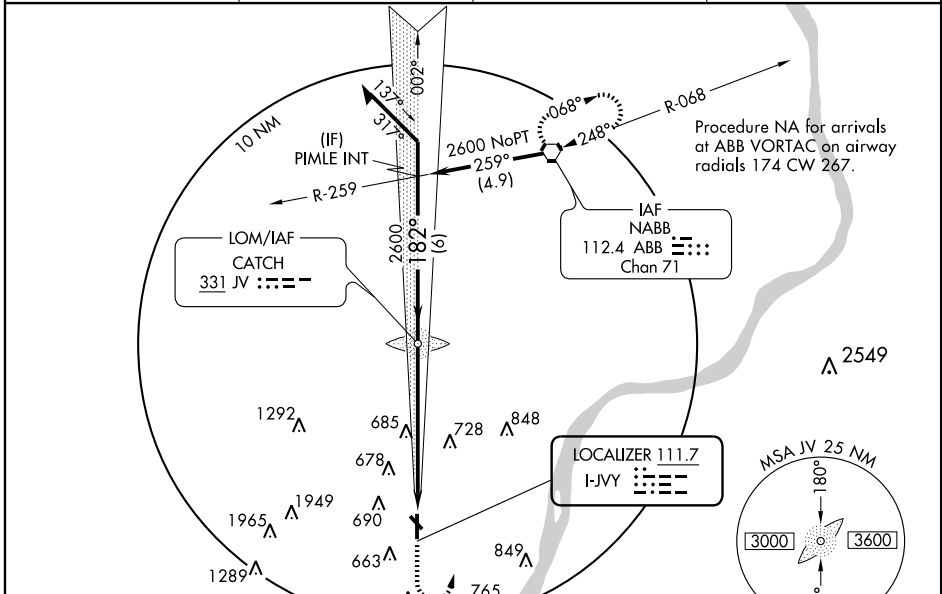
LOC I-JVY 111.7	APP CRS 182°	Rwy Idg 5500
		TDZE 474
		Apt Elev 474

⚠ Autopilot coupled approach NA below 988. When local altimeter setting not received, use Louisville Intl-Standford Field altimeter setting and increase all DA 31 feet and all MDA 40 feet.

MALSR
AS

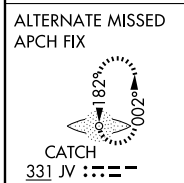
MISSED APPROACH: Climb to 1500 then climbing left turn to 2600 direct ABB VORTAC and hold.

AWOS-3 118.575	LOUISVILLE APP CON 132.075 327.0	CLNC DEL 118.05	UNICOM 122.7 (CTAF)
--------------------------	--	---------------------------	-------------------------------

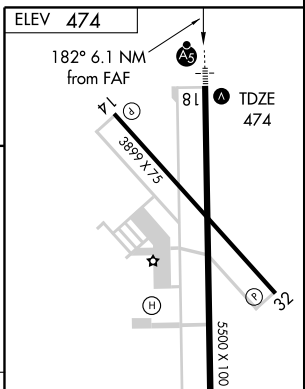
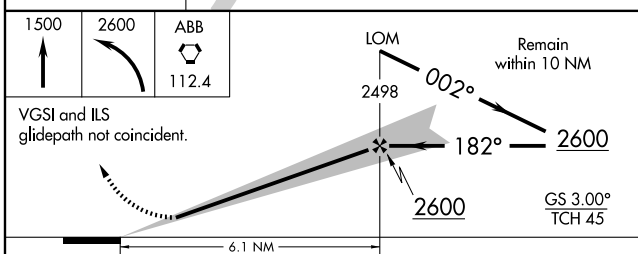


EC-2, 22 OCT 2009 to 19 NOV 2009

EC-2, 22 OCT 2009 to 19 NOV 2009



ADF REQUIRED



CATEGORY	A	B	C	D
S-ILS 18		674-1/2	200 (200-1/2)	
S-LOC 18	1020-1/2	546 (600-1/2)	1020-1 546 (600-1)	1020-1 1/4 546 (600-1 1/4)
CIRCLING	1020-1	546 (600-1)	1020-1 1/2 546 (600-1 1/2)	1100-2 626 (700-2)

REIL Rwy 14, 32
REIL Rwy 18, 36
MIRL Rwy 14-32, 18-36

FAF to MAP 6.1 NM

Knots	60	90	120	150	180
Min:Sec	6:06	4:04	3:03	2:26	2:02