

DEVINE, TEXAS

AL-6713 (FAA)

# RNAV (GPS) RWY 35

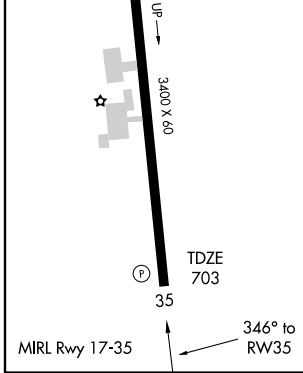
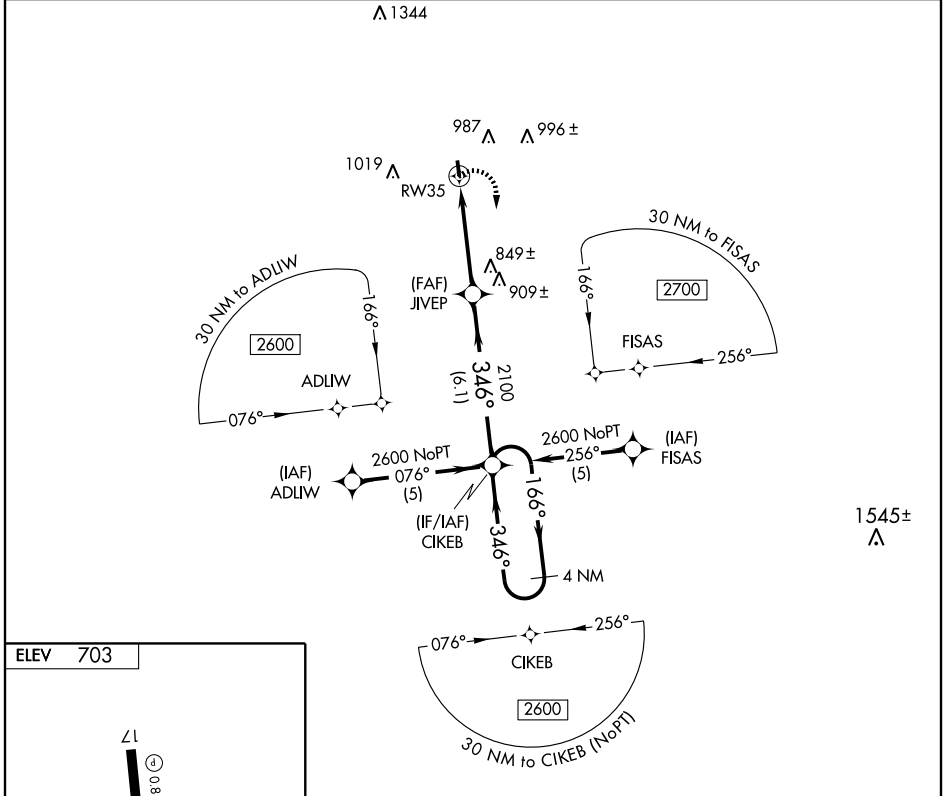
DEVINE MUNI (23R)

APP CRS <b>346°</b>	Rwy Idg <b>3400</b>
	TDZE <b>703</b>
	Apt Elev <b>703</b>

**▽** DME/DME RNP-0.3 NA. Use Castroville Muni altimeter setting; when not received, use Hondo Muni altimeter setting and increase all MDA 40 feet.

**▲** NA MISSED APPROACH: Climbing right turn to 2600 direct CIKEB and hold.

CASTROVILLE AWOS <b>119.250</b>	SAN ANTONIO APP CON <b>118.05 353.5</b>	CTAF <b>122.9</b>
------------------------------------	--	----------------------



2600	CIKEB	4 NM Holding Pattern		
CATEGORY	A	B	C	D
LNAV MDA	1140-1	437 (500-1)	NA	
CIRCLING	1380-1	677 (700-1)	NA	

SC-3, 22 OCT 2009 to 19 NOV 2009

SC-3, 22 OCT 2009 to 19 NOV 2009

DEVINE, TEXAS  
Orig 09183

29°08'N-98°57'W

# RNAV (GPS) RWY 35

DEVINE MUNI (23R)