

ELIZABETHTOWN, KENTUCKY

AL-6712 (FAA)

RNAV (GPS) RWY 5

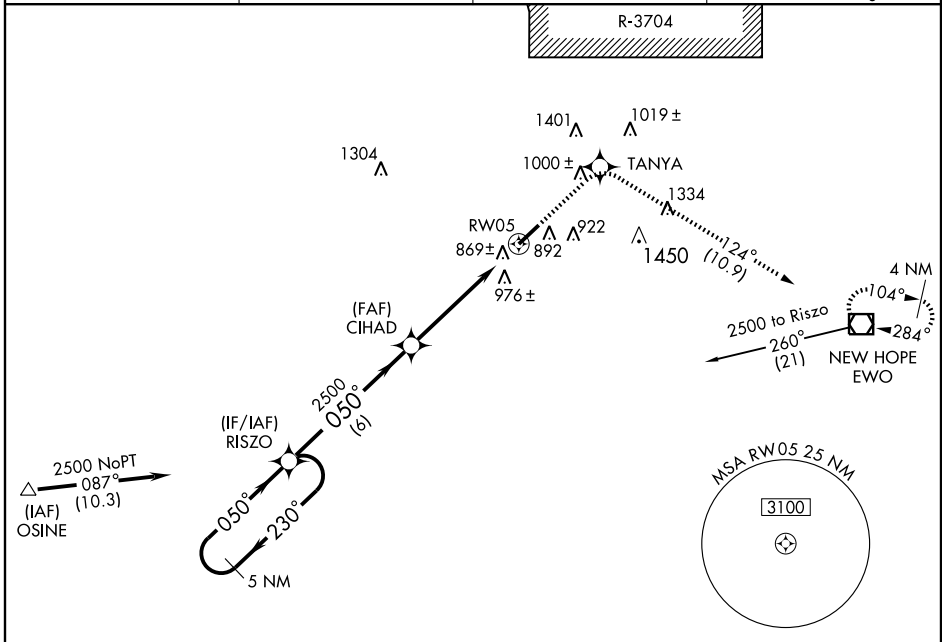
ELIZABETHTOWN/ADDINGTON FIELD (EKK)

WAAS CH 77700 W05A	APP CRS 050°	Rwy Idg TDZE Apt Elev	6001 764 775
--	------------------------	-----------------------------	---

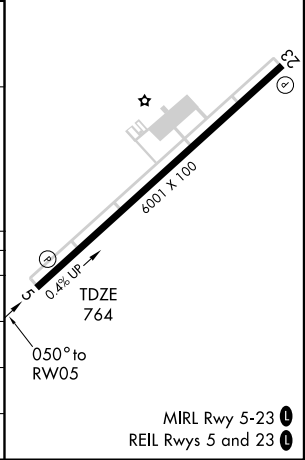
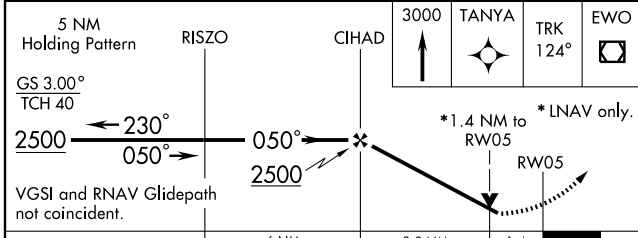
▽ DME/DME RNP-0.3 NA. Baro-VNAV NA below -16°C (4°F).
△ NA If local altimeter setting not received, use Louisville Intl altimeter setting and increase all DAs/MDAs 120 feet.
 VDP and Baro-VNAV NA when using Louisville Intl altimeter setting.

MISSED APPROACH: Climb to 3000 direct TANYA and via 124° track to EWO VOR/DME and hold.

AWOS-3 121.025	LOUISVILLE APP CON 132.075 327.0	CLNC DEL 119.45	UNICOM 122.8 (CTAF) 0
--------------------------	--	---------------------------	--



ELEV 775



CATEGORY	A	B	C	D
LPV DA	1133-1¼		369 (400-1¼)	
LNAV/VNAV DA	1257-1¾		493 (500-1¾)	
LNAV MDA	1220-1	456 (500-1)	1220-1¼ 456 (500-1¼)	1220-1½ 456 (500-1½)
CIRCLING	1260-1¾		485 (500-1¾)	
			1360-2 585 (600-2)	

ELIZABETHTOWN, KENTUCKY
 Orig 08101

37°41'N-85°55'W

RNAV (GPS) RWY 5

SE-1, 22 OCT 2009 to 19 NOV 2009

SE-1, 22 OCT 2009 to 19 NOV 2009