

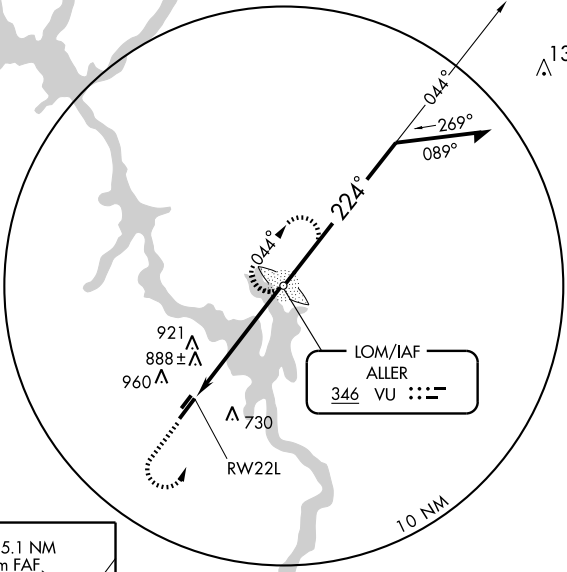
NDB or GPS RWY 22L
ALBEMARLE/ STANLY COUNTY (VUJ)

LOM VU 346	APP CRS 224°	Rwy Idg 5500 TDZE 584 Apt Elev 609
----------------------	------------------------	---

MISSED APPROACH: Climb to 1500 then climbing left turn to 2600 direct ALLER LOM and hold.

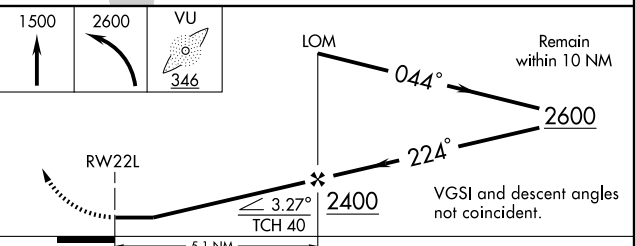
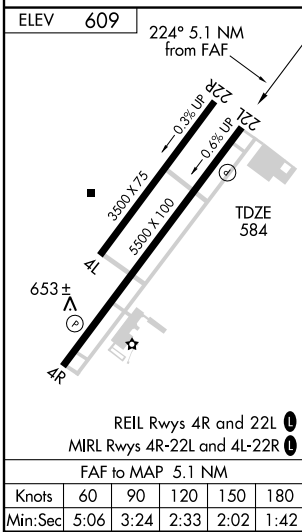
AWOS-3 128.175	CHARLOTTE APP CON 128.32 307.8	STANLY COUNTY TOWER* 126.275 (CTAF) 291.9	GND CON 121.75 254.375	CLNC DEL 121.75 254.375	UNICOM 123.0
--------------------------	--	---	----------------------------------	-----------------------------------	------------------------

RADAR REQUIRED



SE-2, 22 OCT 2009 to 19 NOV 2009

SE-2, 22 OCT 2009 to 19 NOV 2009



CATEGORY	A	B	C	D
S-22L	1260-1 676 (700-1)		1260-2 676 (700-2) 676 (700-2½)	1260-2½ 676 (700-2½)
CIRCLING	1320-1 711 (800-1)		1320-2 711 (800-2)	1320-2½ 711 (800-2½)