

URBANA, OHIO

AL-6706 (FAA)

RNAV (GPS) RWY 20

URBANA / GRIMES FIELD (I74)

| | | |
|------------------------|-----------------------------|---|
| APP CRS 202° | Rwy Idg TDZE Apt Elev | 4400 1068 1068 |
|------------------------|-----------------------------|---|

DME/DME RNP-0.3 NA.

MISSED APPROACH: Climbing left turn to 3000 direct HIRID WP and hold.

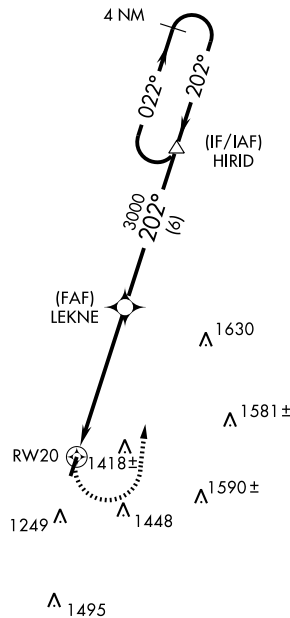
AWOS-3
118.325

DAYTON APP CON
118.425 294.5

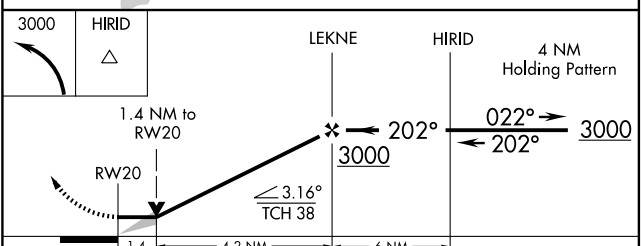
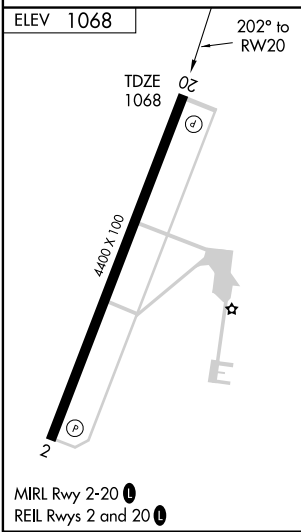
UNICOM
122.7 (CTAF) 0

EC-2, 22 OCT 2009 to 19 NOV 2009

EC-2, 22 OCT 2009 to 19 NOV 2009



NoPT for arrival at HIRID WP on V-210 southwestbound.



| CATEGORY | A | B | C | D |
|----------|----------|-------------|---------------------------|----|
| LNAV MDA | 1560 - 1 | 492 (500-1) | 1560 - 1¼ 492 (500-1¼) | NA |
| CIRCLING | 1580 - 1 | 512 (600-1) | 1580 - 1½ 512 (600-1½) | NA |

URBANA, OHIO
Orig-A 09295

40°08'N - 83°45'W

RNAV (GPS) RWY 20

URBANA / GRIMES FIELD (I74)