

BIG LAKE, TEXAS

AL-6703 (FAA)

# RNAV (GPS) RWY 16

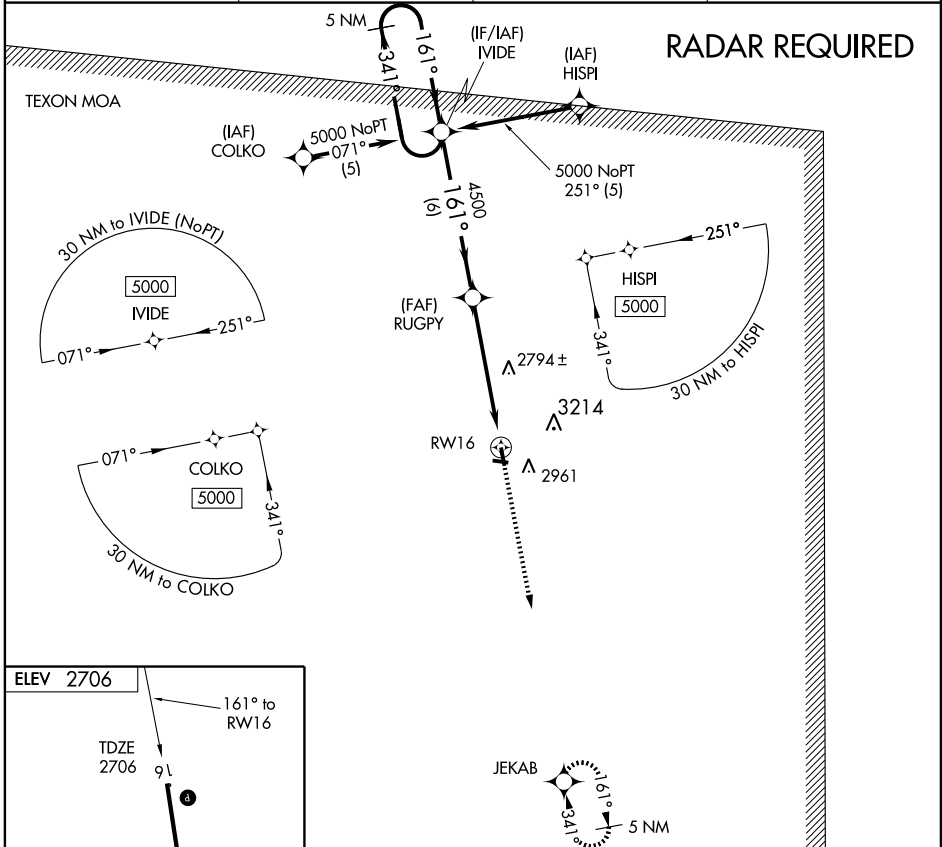
BIG LAKE/ REAGAN COUNTY (E41)

APP CRS	Rwy Idg	<b>4032</b>
<b>161°</b>	TDZE	<b>2706</b>
	Apt Elev	<b>2706</b>

**▽** Use San Angelo altimeter setting; If not received, procedure NA.  
**▲** NA Circling NA east of Rwy 16-34. DME/DME RNP-0.3 NA.

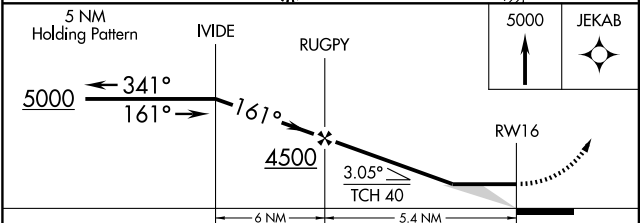
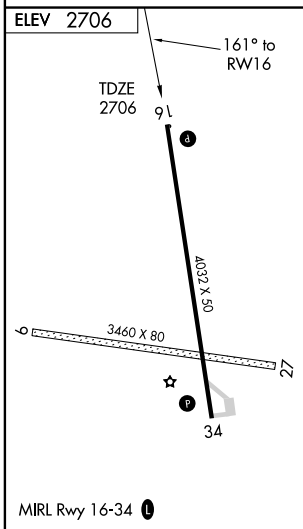
MISSED APPROACH: Climb to 5000 direct JEKAB and hold.

SAN ANGELO ASOS <b>128.45</b>	FORT WORTH CENTER <b>126.15 322.55</b>	CTAF <b>122.9</b>	<b>123.5 0</b>
----------------------------------	---	----------------------	----------------



SC-3, 22 OCT 2009 to 19 NOV 2009

SC-3, 22 OCT 2009 to 19 NOV 2009



CATEGORY	A	B	C	D
LNAV MDA	3460-1 754 (800-1)	3460-1¼ 754 (800-1¼)	3460-2¼ 754 (800-2¼)	NA
CIRCLING	3460-1 754 (800-1)	3460-1¼ 754 (800-1¼)	3460-2¼ 754 (800-2¼)	NA

BIG LAKE, TEXAS  
Orig 07186

31°12' N-101°28' W

BIG LAKE/ REAGAN COUNTY (E41)  
**RNAV (GPS) RWY 16**