

BEACH CITY, OHIO

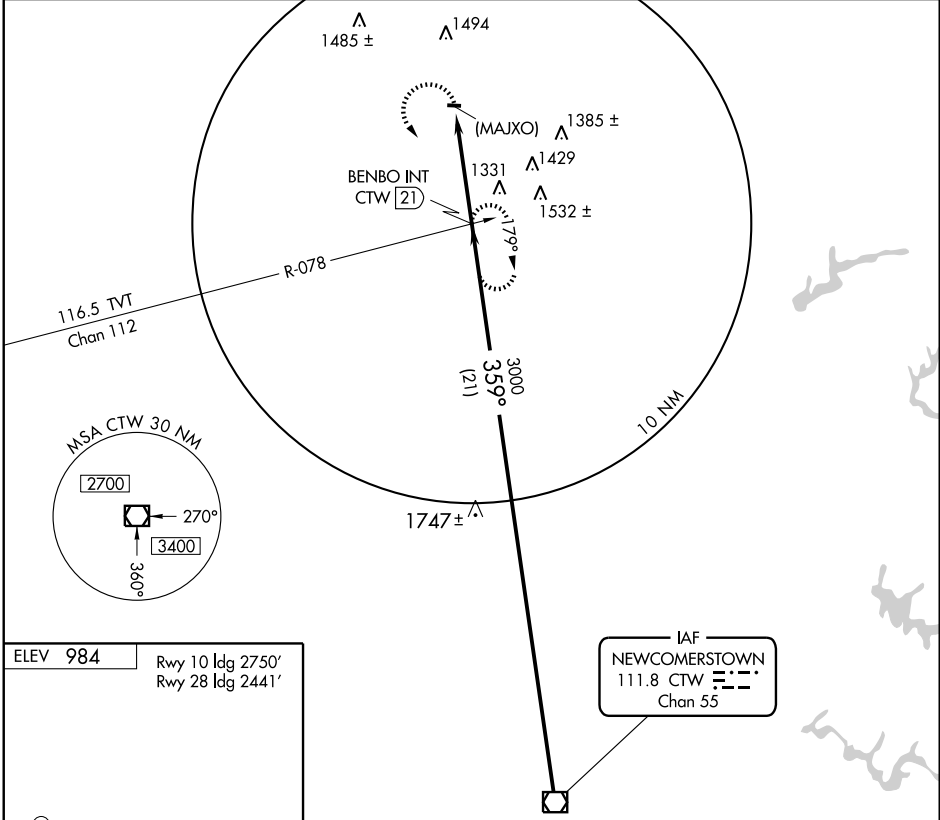
AL-6702 (FAA)

VOR or GPS-A BEACH CITY (2D7)

VOR/DME CTW 111.8 Chan 55	APP CRS 359°	Rwy ldg TDZE Apt Elev N/A 984
---	------------------------	--

<p>▼ ▲ NA</p> <p>Use Akron-Canton altimeter setting.</p>	<p>MISSED APPROACH: Climbing left turn to 3000 via CTW R-359 to BENBO INT/CTW 21 DME and hold.</p>
--	--

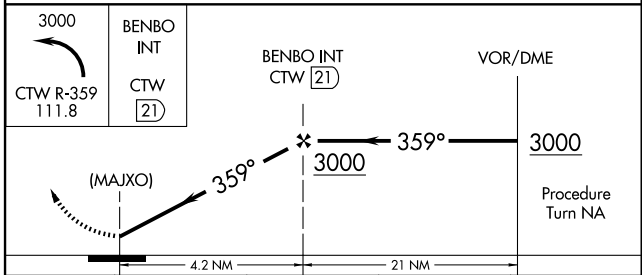
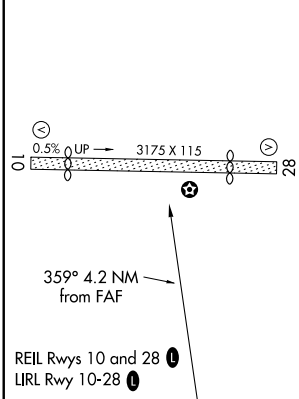
<p>AKRON-CANTON APP CON *</p> <p>125.5 371.875</p>	<p>UNICOM</p> <p>122.8 (CTAF) 122.85</p>
---	---



EC-2, 22 OCT 2009 to 19 NOV 2009

EC-2, 22 OCT 2009 to 19 NOV 2009

ELEV 984	Rwy 10 ldg 2750' Rwy 28 ldg 2441'
----------	--------------------------------------



FAF to MAP 4.2 NM						
Knots	60	90	120	150	180	
Min:Sec	4:12	2:48	2:06	1:41	1:24	
CATEGORY	A		B		C	D
CIRCLING	1720-1		736 (800-1)		NA	

BEACH CITY, OHIO
Amdt 1 07242

40°39'N - 81°33'W

BEACH CITY (2D7) VOR or GPS-A