

RNAV (GPS) RWY 12

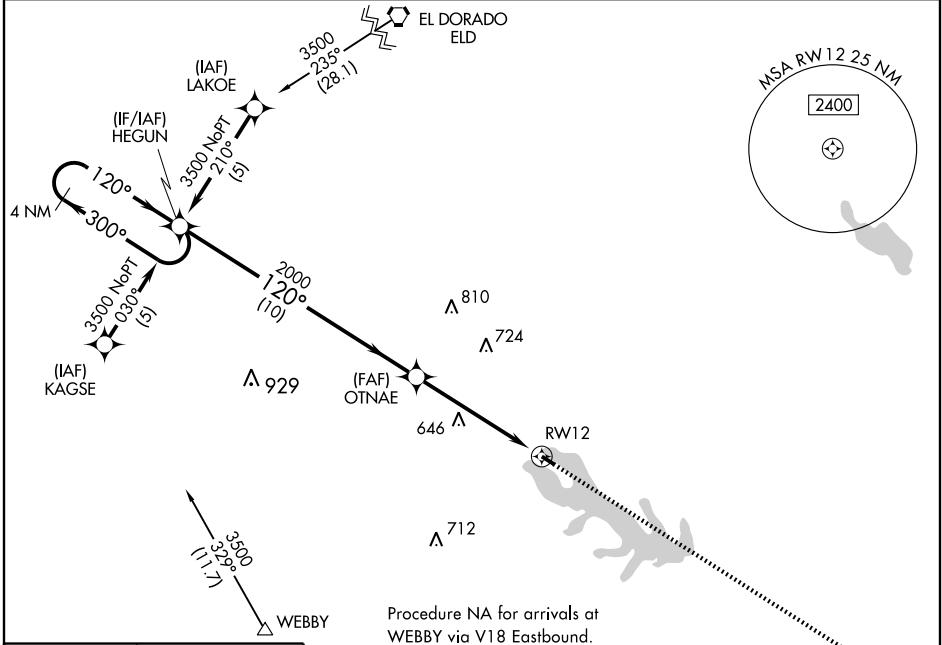
HOMER MUNI (5F4)

APP CRS 120°	Rwy Idg TDZE Apt Elev	3199 244 244
------------------------	-----------------------------	---

▽ Use El Dorado, AR altimeter setting, when not received use Ruston altimeter setting. Procedure NA at night.
▲ NA DME/DME RNP-0.3 NA. Visibility reduction by helicopters NA.

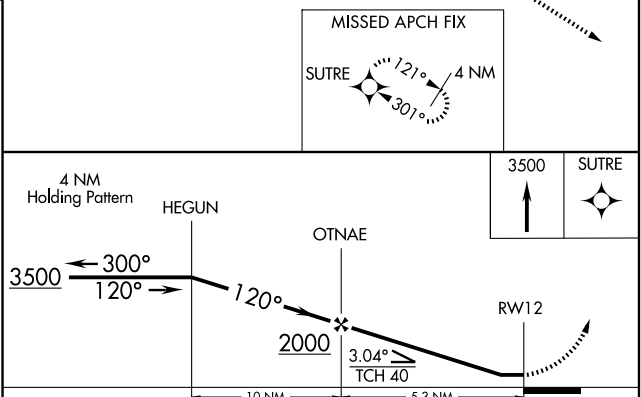
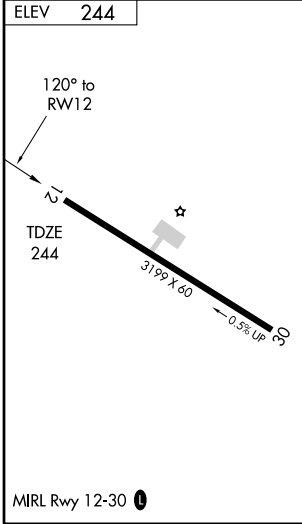
MISSED APPROACH: Climb to 3500 direct SUTRE and hold.

SHREVEPORT APP CON 118.6 350.2	CTAF 122.9	122.8
--	----------------------	--------------



SC-4, 22 OCT 2009 to 19 NOV 2009

SC-4, 22 OCT 2009 to 19 NOV 2009



CATEGORY	A	B	C	D
LNAV MDA	1020-1 776 (800-1)	1020-1¼ 776 (800-1¼)	1020-2¼ 776 (800-2¼)	NA
CIRCLING	1020-1 776 (800-1)	1020-1¼ 776 (800-1¼)	1020-2¼ 776 (800-2¼)	NA