

ERWIN, NORTH CAROLINA

AL-6700 (FAA)

VOR/DME <b>FAY</b> <b>108.8</b> Chan <b>25</b>	APP CRS <b>020°</b>	Rwy Idg <b>5000</b> TDZE <b>196</b> Apt Elev <b>198</b>
---------------------------------------------------------	------------------------	---------------------------------------------------------------

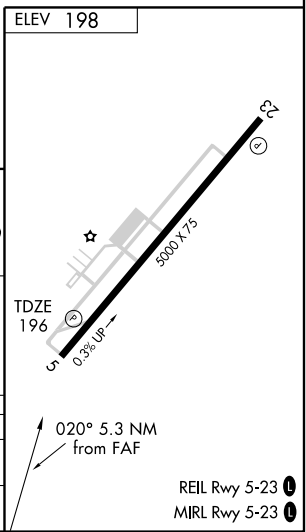
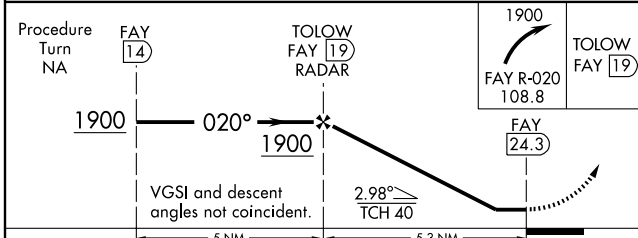
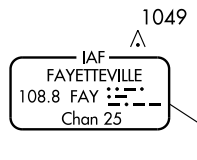
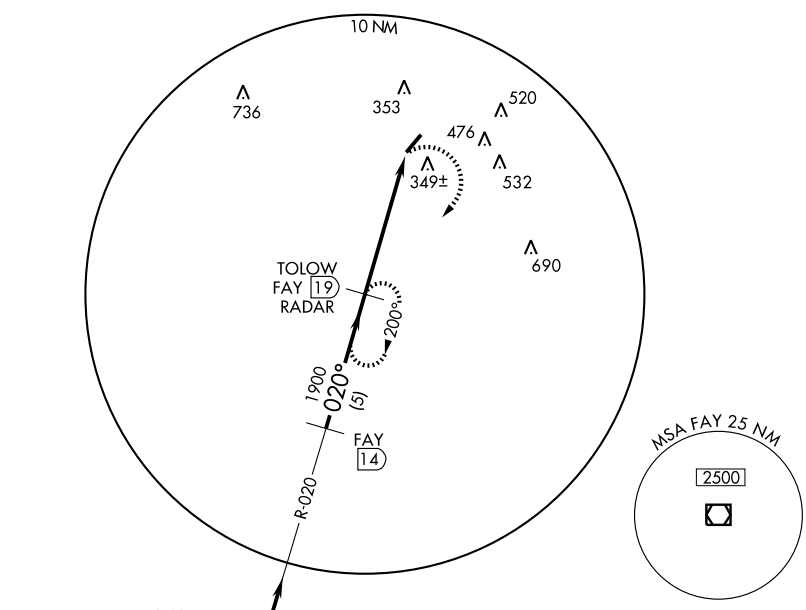
# VOR/DME RWY 5

ERWIN/ HARNETT RGNL JETPORT (H.R.J)

		MISSED APPROACH: Climbing right turn to 1900 via FAY R-020 to TOLOW/FAY 19 DME and hold.	
AWOS-3 <b>119.025</b>	FAYETTEVILLE APP CON <b>125.175 397.85</b>	GCO <b>135.075</b>	UNICOM <b>122.7 (CTAF) 0</b>

SE-2, 22 OCT 2009 to 19 NOV 2009

SE-2, 22 OCT 2009 to 19 NOV 2009



CATEGORY	A	B	C	D
S-5	800-1 604 (700-1)	800-1¼ 604 (700-1¼)	800-1¾ 604 (700-1¾)	NA
CIRCLING	800-1 602 (700-1)	800-1¼ 602 (700-1¼)	800-1¾ 602 (700-1¾)	NA

ERWIN, NORTH CAROLINA  
Amdt 2A 09295

35°23'N-78°44'W

ERWIN/ HARNETT RGNL JETPORT (H.R.J)  
**VOR/DME RWY 5**