

ERWIN, NORTH CAROLINA

AL-6700 (FAA)

# NDB RWY 23

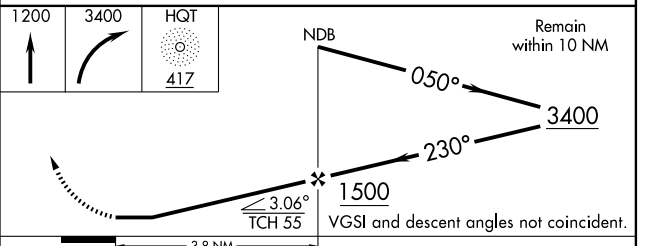
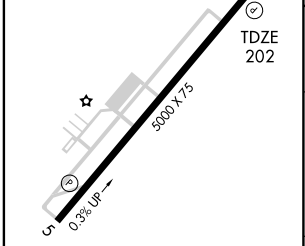
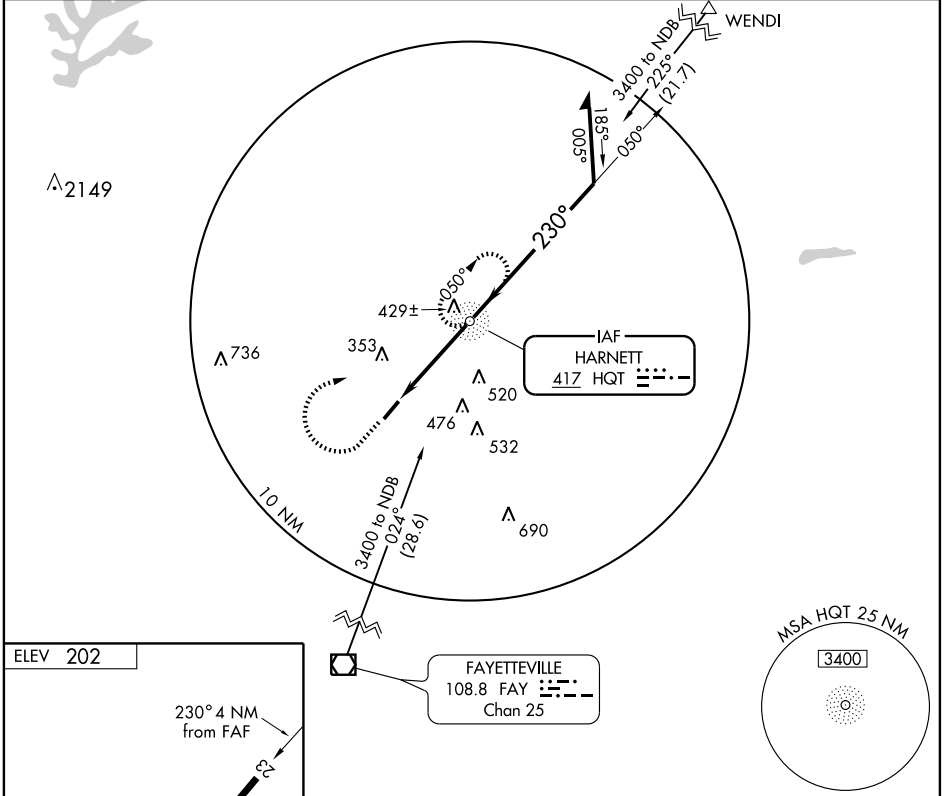
ERWIN/HARNETT RGNL JETPORT (H.R.J)

NDB HQT <b>417</b>	APP CRS <b>230°</b>	Rwy Idg <b>5000</b>
		TDZE <b>202</b>
		Apt Elev <b>202</b>

**▼** When local altimeter setting not received, use Smithfield altimeter setting and increase all MDAs 60 feet, and S-23 CAT C visibility ¼ mile.  
**▲ NA** Visibility reduction by helicopters NA.

MISSED APPROACH: Climb to 1200 then climbing right turn to 3400 direct HQT NDB and hold.

AWOS-3 <b>119.025</b>	FAYETTEVILLE APP CON <b>125.175 397.85</b>	GCO <b>135.075</b>	UNICOM <b>122.7 (CTAF) 0</b>
--------------------------	---	-----------------------	---------------------------------



CATEGORY	A	B	C	D
S-23	660-1	458 (500-1)	660-1¼ 458 (500-1¼)	NA
CIRCLING	660-1	458 (500-1)	720-1½ 518 (600-1½)	NA

ERWIN, NORTH CAROLINA  
Amdt 2A 09295

35° 23' N - 78° 44' W

ERWIN/HARNETT RGNL JETPORT (H.R.J)

# NDB RWY 23

SE-2, 22 OCT 2009 to 19 NOV 2009

SE-2, 22 OCT 2009 to 19 NOV 2009