

LOC/DME I-HRJ <b>108.35</b> Chan 20 (Y)	APP CRS <b>048°</b>	Rwy Idg <b>5000</b> TDZE <b>195</b> Apt Elev <b>202</b>
---	------------------------	---

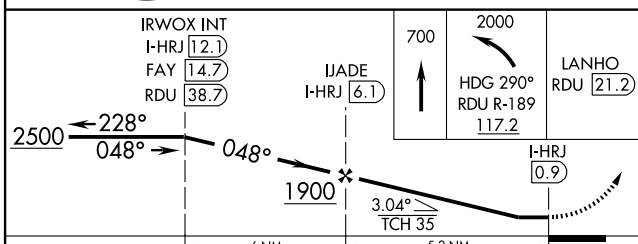
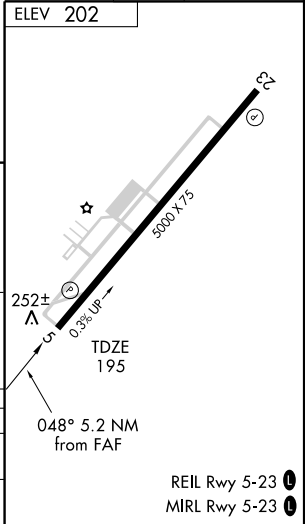
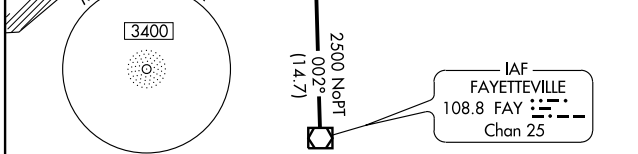
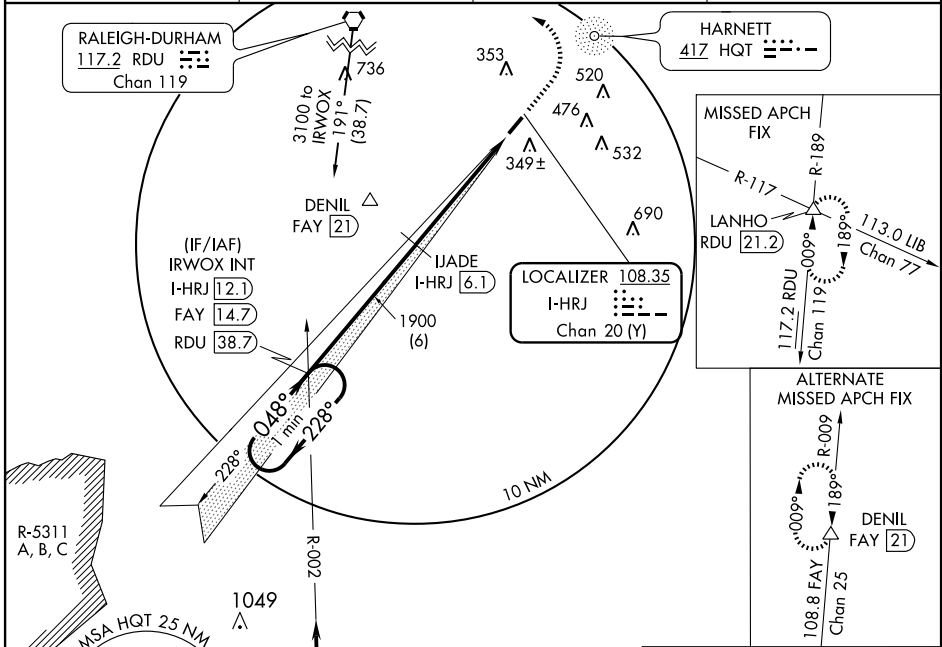
# LOC/DME RWY 5

ERWIN/ HARNETT RGNL JETPORT (HRJ)

**⚠** Visibility reduction by helicopters NA. When local altimeter setting not received, use Smithfield altimeter setting and increase all MDA 60 feet.

**⚠** MISSED APPROACH: Climb to 700 then climbing left turn to 2000 via heading 290° and RDU R-189 to LANHO INT/RDU 21.2 DME and hold.

AWOS-3 <b>119.025</b>	FAYETTEVILLE APP CON <b>125.175 397.85</b>	GCO <b>135.075</b>	UNICOM <b>122.7 (CTAF)</b> <b>0</b>
--------------------------	---	-----------------------	--



CATEGORY	A	B	C	D
S-5	520-1	325 (400-1)		NA
CIRCLING	600-1 398 (400-1)	660-1 458 (500-1)	720-1½ 518 (600-1½)	NA