

MILLER, SOUTH DAKOTA

AL-6698 (FAA)

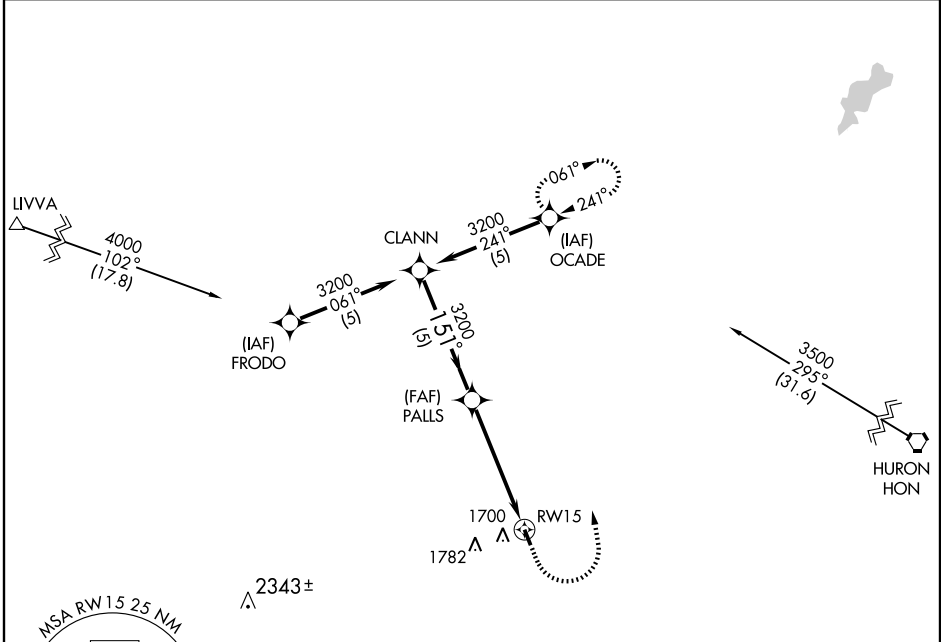
GPS RWY 15

MILLER MUNI (MKA)

APP CRS 151°	Rwy Idg 3600
	TDZE 1567
	Apt Elev 1569

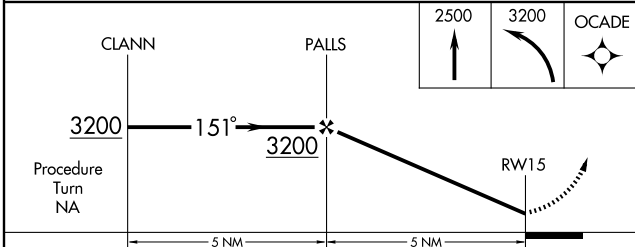
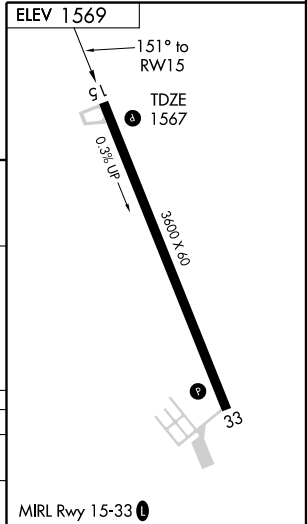
NA Use Huron altimeter setting. MISSED APPROACH: Climb to 2500 then climbing left turn to 3200 direct OCADE WP and hold.

MINNEAPOLIS CENTER 125.1 269.1	CTAF 122.9	122.8
--	----------------------	--------------



NC-1, 22 OCT 2009 to 19 NOV 2009

NC-1, 22 OCT 2009 to 19 NOV 2009



CATEGORY	A	B	C	D
S-15	2040-1	473 (500-1)	NA	
CIRCLING	2180-1 611 (700-1)	2220-1 651 (700-1)	NA	

MILLER, SOUTH DAKOTA
Orig 08269

44°32'N - 98°57'W

MILLER MUNI (MKA)

GPS RWY 15

MIRL Rwy 15-33