

SMITH CENTER, KANSAS

AL-6696 (FAA)

GPS RWY 35

SMITH CENTER MUNI (K82)

APP CRS	Rwy Idg	3500
353°	TDZE	1792
	Apt Elev	1799

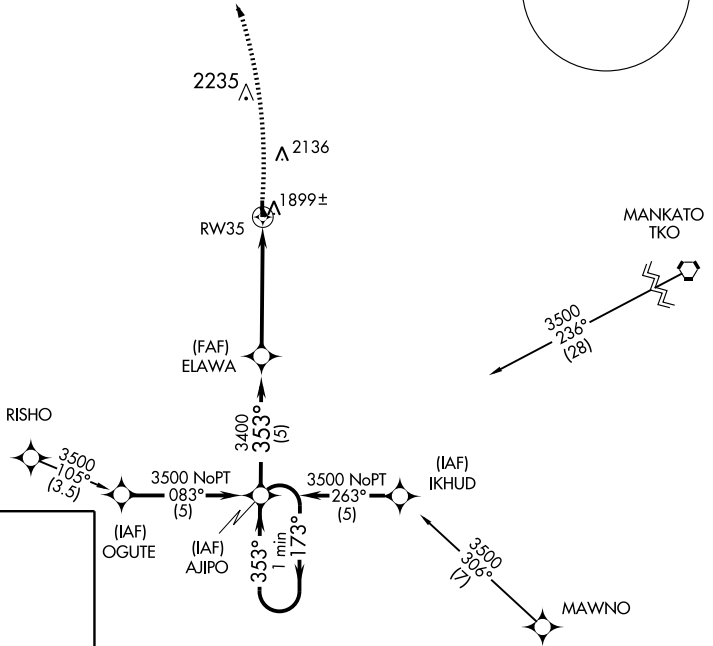
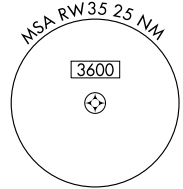
▲ NA Use Concordia altimeter setting.

MISSED APPROACH: Climb to 2700, then climbing left turn to 3700 direct BYLUE WP and hold.

AWOS-3
118.450

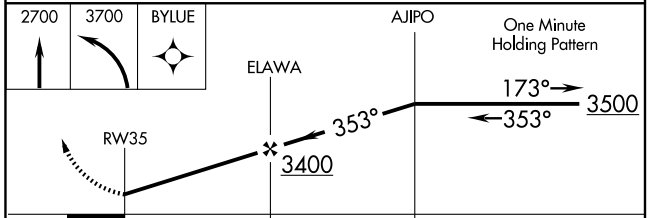
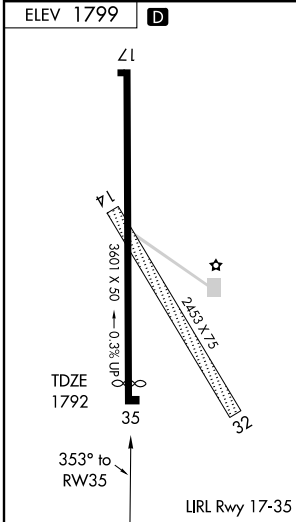
MINNEAPOLIS CENTER
119.4 278.8

UNICOM
122.8 (CTAF)



NC-2, 22 OCT 2009 to 19 NOV 2009

NC-2, 22 OCT 2009 to 19 NOV 2009



CATEGORY	A	B	C	D
S-35	2320-1	528 (600-1)	NA	
CIRCLING	2420-1 621 (700-1)	2440-1 641 (700-1)	NA	

SMITH CENTER, KANSAS
Orig 08325

39°46'N - 98°48'W

SMITH CENTER MUNI (K82)
GPS RWY 35