

# VOR/DME -B

HUNTINGTON MUNI (69V)

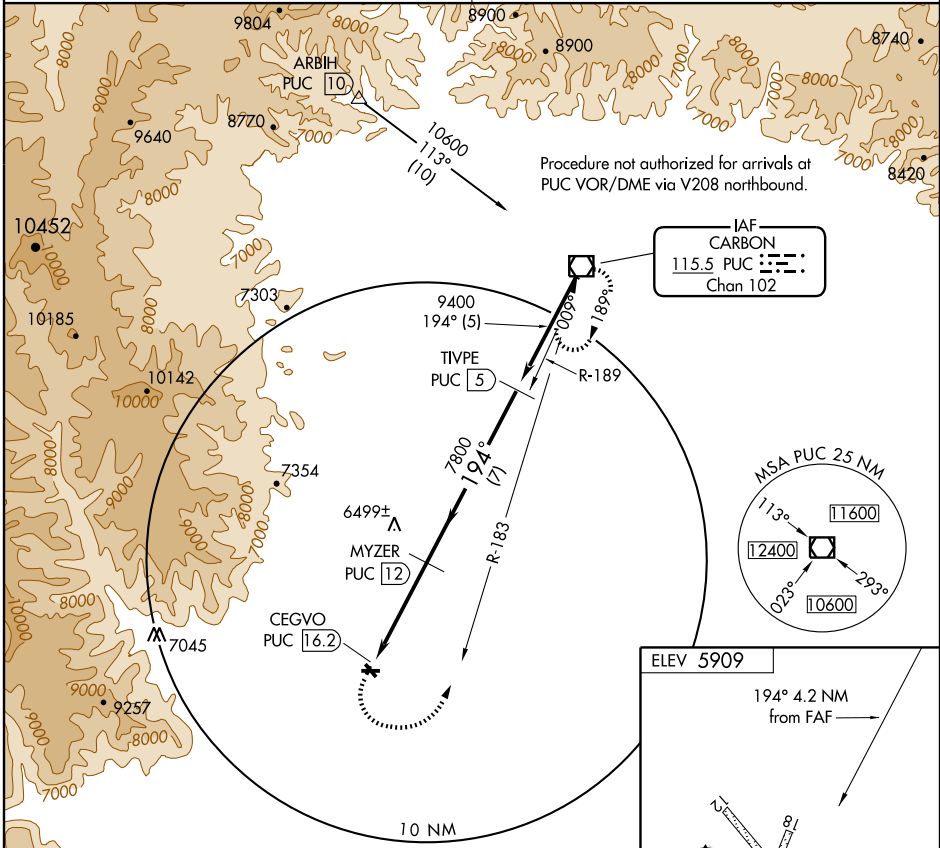
VOR/DME PUC <b>115.5</b> Chan <b>102</b>	APP CRS <b>194°</b>	Rwy Idg TDZE Apt Elev <b>N/A</b> <b>N/A</b> <b>5909</b>
--	------------------------	--

Use Carbon County Rgnl/Buck Davis Field altimeter setting; when not received, procedure not authorized.  
 Circling not authorized at night to Rwy 18, 36, 12, and 30.

MISSED APPROACH: Climbing left turn to 10000 via PUC VOR/DME R-183 to PUC VOR/DME and hold.

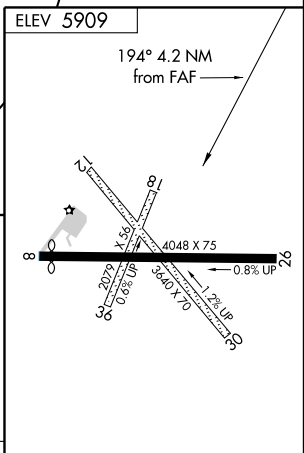
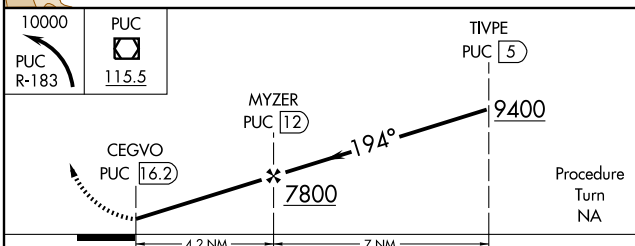
SALT LAKE CENTER  
**133.9 370.85**

UNICOM  
**122.8 (CTAF)**



SW-4, 22 OCT 2009 to 19 NOV 2009

SW-4, 22 OCT 2009 to 19 NOV 2009



CATEGORY	A	B	C	D
CIRCLING	6620-1	711 (800-1)	6620-2 711 (800-2)	NA

MIRL Rwy 8-26