

RNAV (GPS) -C

HUNTINGTON MUNI (69V)

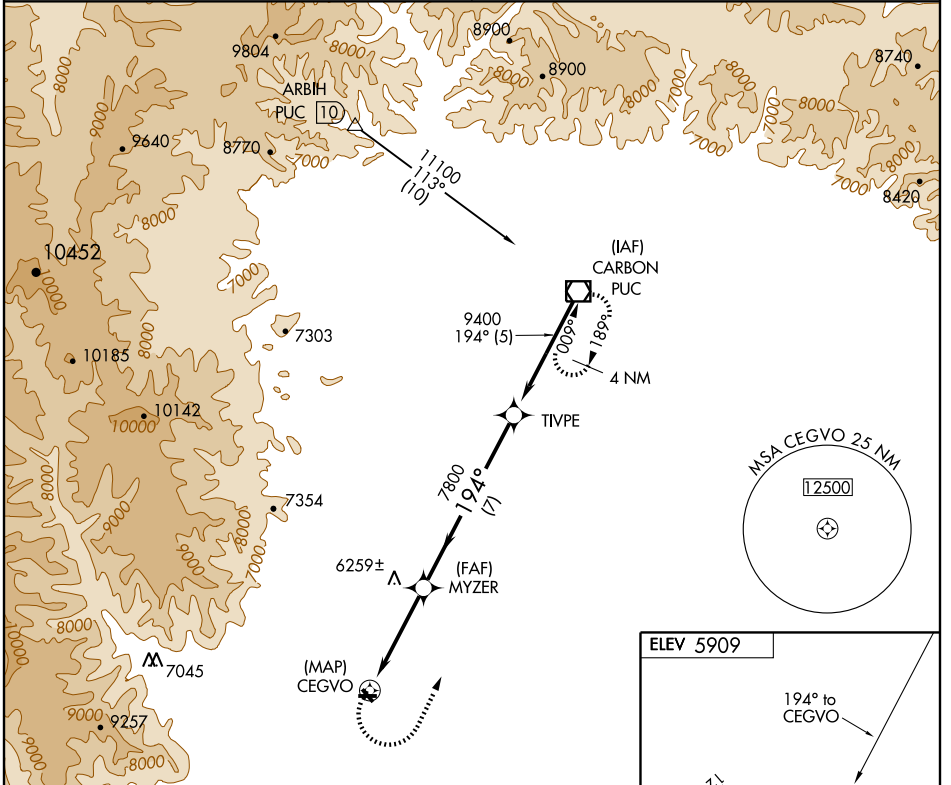
APP CRS 194°	Rwy Idg TDZE Apt Elev	N/A N/A 5909
------------------------	-----------------------------	---

▽ Use Carbon County Rgnl/Buck Davis Field altimeter setting; when not received, procedure NA.
△ NA Procedure NA at night.
 GPS or RNP-0.3 required. DME/DME RNP-0.3 NA.

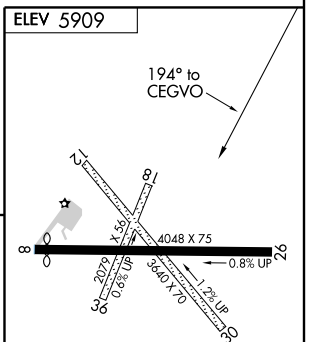
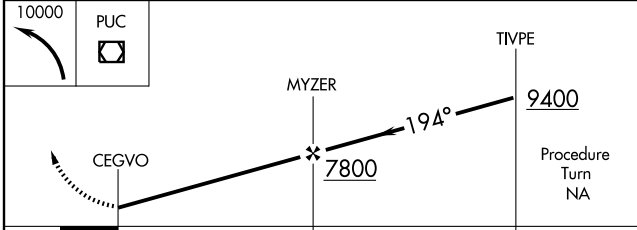
MISSED APPROACH: Climbing left turn to 10000 direct PUC VOR/DME and hold.

SALT LAKE CENTER
133.9 370.85

UNICOM
122.8 (CTAF) 0



Procedure not authorized for arrival at ARBIH via V134 northwestbound.
 Procedure not authorized for arrival at PUC VOR/DME via V208 northbound.



CATEGORY	A	B	C	D
CIRCLING	6520-1	611 (700-1)	6600-2 691 (700-2)	NA

MIRL Rwy 8-26 0

SW-4, 22 OCT 2009 to 19 NOV 2009

SW-4, 22 OCT 2009 to 19 NOV 2009