

VINTON, IOWA

AL-6691 (FAA)

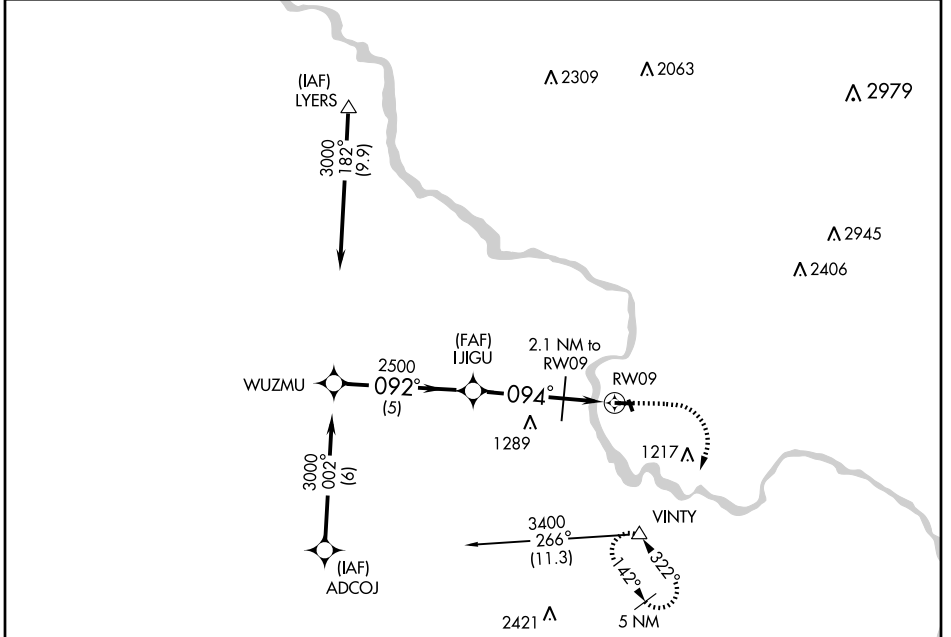
GPS RWY 9

VINTON VETERANS MEMORIAL AIRPARK (VTI)

APP CRS 094°	Rwy ldg 4000
	TDZE 838
	Apt Elev 845

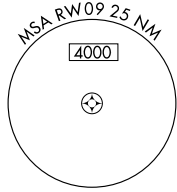
<p>▼ ▲ NA</p> <p>Use Cedar Rapids altimeter setting.</p>	<p>MISSED APPROACH: Climb to 3000, then climbing right turn to 3400 direct VINTY WP and hold.</p>
--	---

AWOS-3 120.075	CEDAR RAPIDS APP CON * 134.05 266.8	UNICOM 122.8 (CTAF) 0
--------------------------	---	---------------------------------

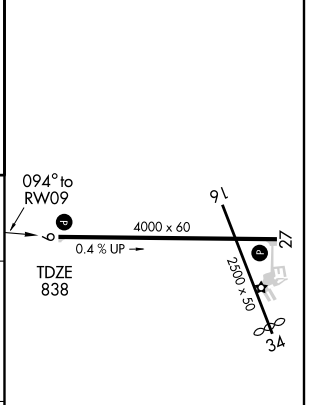
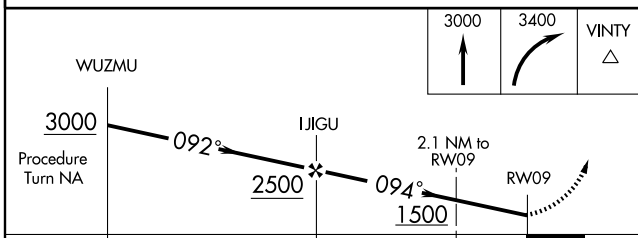


NC-3, 22 OCT 2009 to 19 NOV 2009

NC-3, 22 OCT 2009 to 19 NOV 2009



ELEV 845	Rwy 34 ldg 2310'
----------	------------------



	WUZMU		IJIGU		RW09	
	3000		2500		1500	
	5 NM		3 NM		2.1 NM	
CATEGORY	A	B	C	D		
S-9	1300-1	462 (500-1)	NA			
CIRCLING	1380-1	535 (600-1)	NA			

VINTON, IOWA
Orig 09015

VINTON VETERANS MEMORIAL AIRPARK (VTI)
42°13'N-92°02'W
GPS RWY 9