

RNAV (GPS) RWY 18

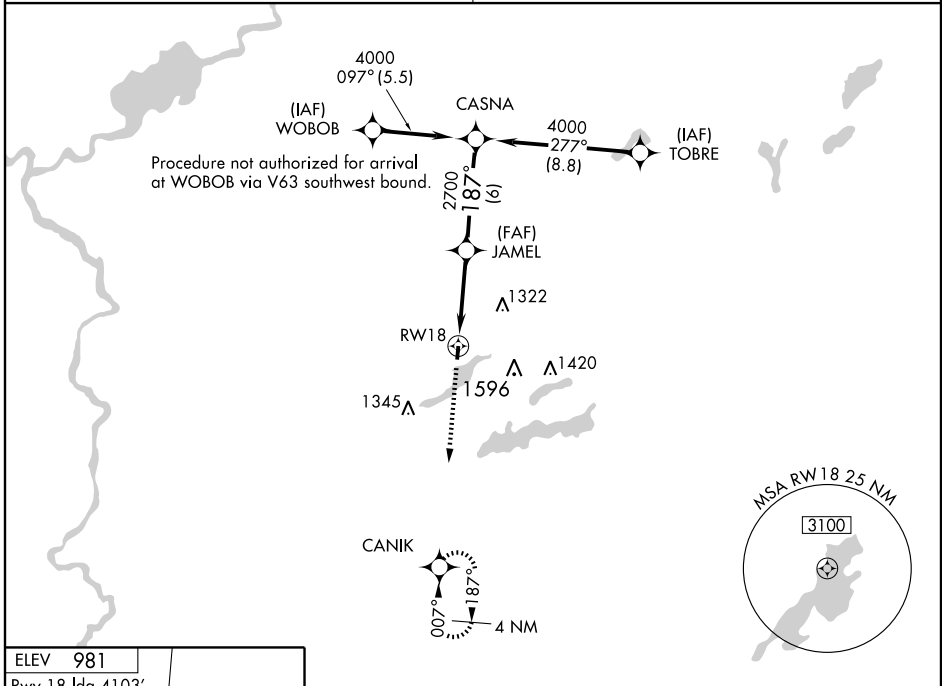
DELAVAN/LAKE LAWN (C59)

APP CRS	Rwy ldg	4103
187°	TDZE	978
	Apt Elev	981

NA GPS or RNP-0.3 Required, DME/DME RNP-0.3 NA. Obtain local altimeter setting on CTAF; when not received, use Rockford altimeter setting.

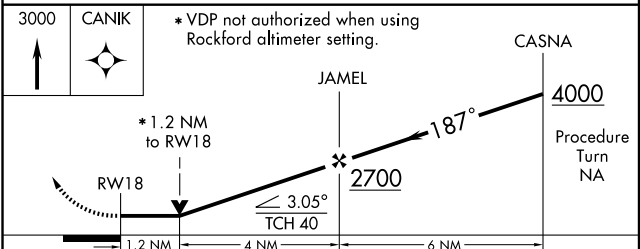
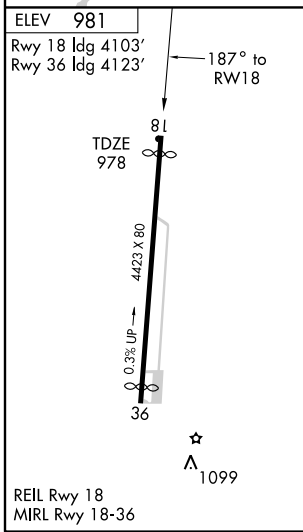
MISSED APPROACH: Climb to 3000 direct CANIK WP and hold.

ROCKFORD APP CON 121.0 327.0	CTAF 122.9
--	----------------------



EC-3, 22 OCT 2009 to 19 NOV 2009

EC-3, 22 OCT 2009 to 19 NOV 2009



CATEGORY	A	B	C	D
LNAV MDA	1420-1	442 (500-1)	1420-1¼ 442 (500-1¼)	1420-1½ 442 (500-1½)
CIRCLING	1420-1 439 (500-1)	1440-1 459 (500-1)	1440-1½ 459 (500-1½)	1540-2 559 (600-2)
ROCKFORD ALTIMETER SETTING MINIMUMS				
LNAV MDA	1540-1	562 (600-1)	1540-1½ 562 (600-1½)	1540-1¾ 562 (600-1¾)
CIRCLING	1540-1	559 (600-1)	1540-1½ 559 (600-1½)	1580-2 599 (600-2)