

AMBLER, ALASKA

AL-6686 (FAA)

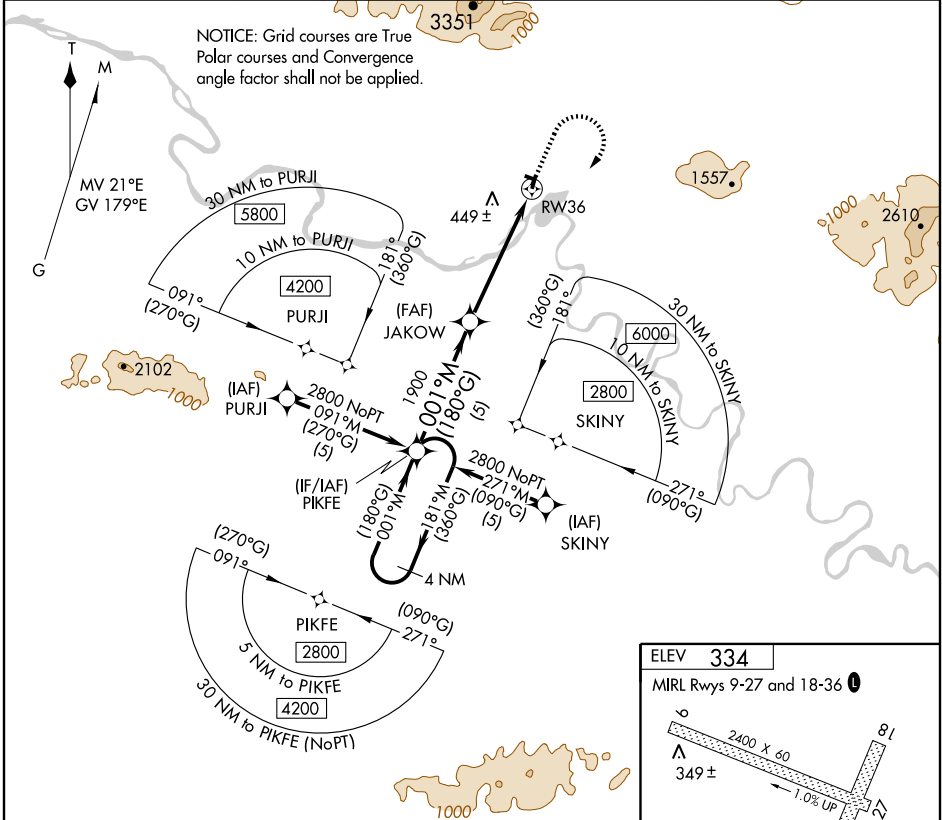
RNAV (GPS) Z RWY 36

AMBLER (AFM) (PAFM)

| | |
|---|---|
| APP CRS 001°M (180°G) | Rwy Idg 3000 TDZE 313 Apt Elev 334 |
|---|---|

⚠ Circling not authorized west of Rwy 18-36.
⚠ NA GPS or RNP-0.3 required. DME/DME RNP-0.3 NA. MISSED APPROACH: Climb to 1000 then climbing right turn to 2800 direct PIKFE WP and hold.

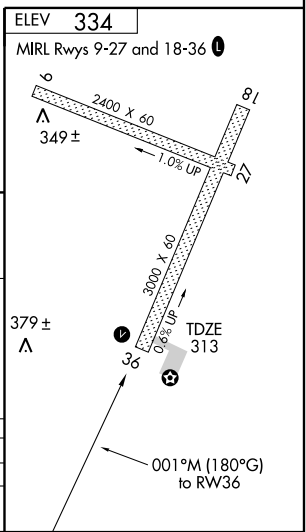
| | | | |
|------------------------|--|--------------------------------|-------------------------------|
| AWOS-3 132.1 | ANCHORAGE CENTER 119.2 263.0 | KOTZEBUE RADIO 122.0 | CTAF 122.7 0 |
|------------------------|--|--------------------------------|-------------------------------|



AK, 22 OCT 2009 to 17 DEC 2009

AK, 22 OCT 2009 to 17 DEC 2009

| | | | | |
|--|------------------------------------|-----------------------------|------------------------|--------------------------------|
| 4 NM Holding Pattern | PIKFE | 1000 | 2800 | PIKFE |
| | 2800 ← 181°M 001°M → (180°G) | (180°G) 001°M (180°G) | JAKOW | 1.1 NM to RW36 2.96° TCH 40 |
| VGSi and descent angles not coincident | | 5 NM | 3.9 NM | 1.1 |
| CATEGORY | A | B | C | D |
| LNAV MDA | | 660-1 347 (400-1) | | NA |
| CIRCLING | 700-1 366 (400-1) | 800-1 466 (500-1) | 800-1½ 466 (500-1½) | NA |



AMBLER, ALASKA
Orig 09127

67°06'N - 157°51'W

RNAV (GPS) Z RWY 36

AMBLER (AFM) (PAFM)