

AMBLER, ALASKA

AL-6686 (FAA)

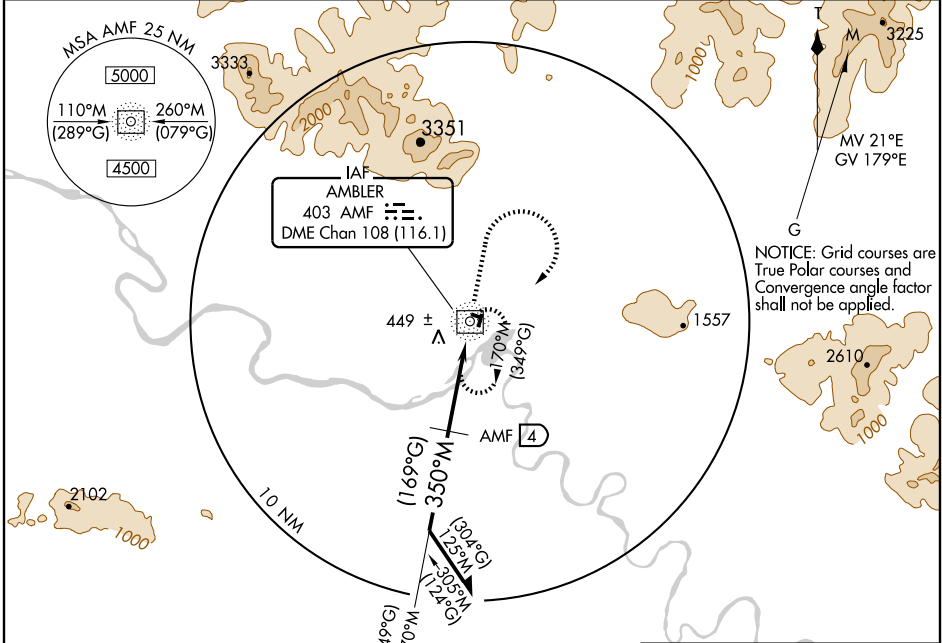
NDB RWY 36

AMBLER (AFM) (PAFM)

NDB/DME AMF 403	APP CRS 350°M	Rwy Idg 3000
Chan 108(116.1)	(169°G)	TDZE 292
		Apt Elev 334

⚠ Circling not authorized west of Rwy 18-36. **⚠** MISSED APPROACH: Climb to 1300 then right climbing turn to 3000 direct AMF NDB and hold.

AWOS-3 132.1	ANCHORAGE CENTER 119.2 263.0	KOTZEBUE RADIO 122.0	CTAF 122.7 0
------------------------	--	--------------------------------	-------------------------------

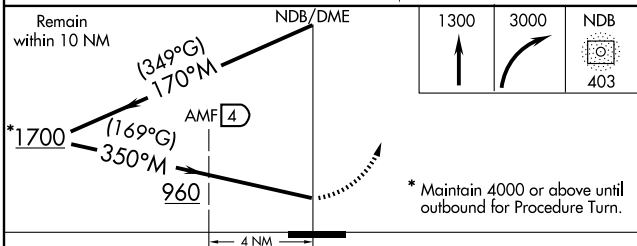


NOTICE: Grid courses are True Polar courses and Convergence angle factor shall not be applied.

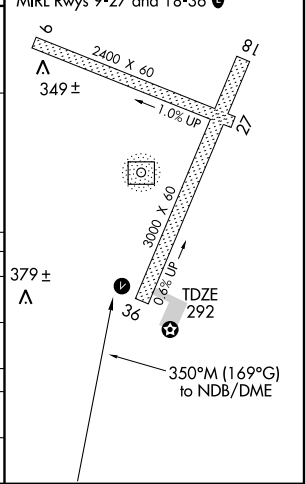
AK, 22 OCT 2009 to 17 DEC 2009

AK, 22 OCT 2009 to 17 DEC 2009

Remain within 10 NM NDB/DME



ELEV 334 MIRL Rwy 9-27 and 18-36 **0**



CATEGORY	A	B	C	D
S-36	960-1 668 (700-1)		960-2 668 (700-2)	NA
CIRCLING	960-1 626 (700-1)		960-2 626 (700-2)	NA
DME MINIMUMS				
S-36	860-1 568 (600-1)		860-1 1/2 568 (600-1 1/2)	NA
CIRCLING	860-1 526 (600-1)		860-1 1/2 526 (600-1 1/2)	NA

AMBLER, ALASKA
Amdt 2A 09127

67°06'N - 157°51'W

AMBLER (AFM) (PAFM)
NDB RWY 36