

POINT HOPE, ALASKA

AL-6685 (FAA)

NDB RWY 19

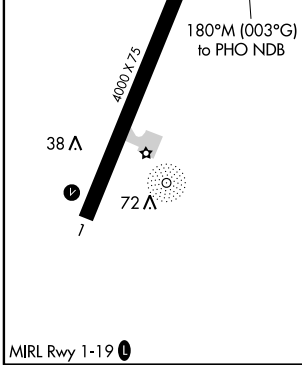
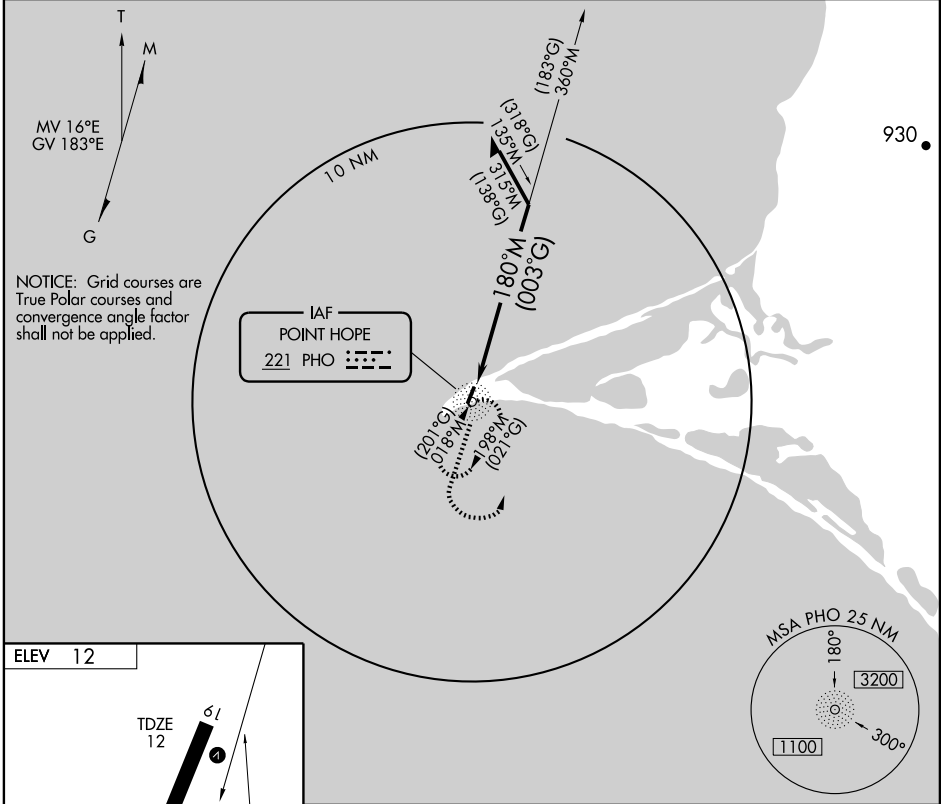
POINT HOPE (PHO) (PAP0)

NDB PHO 221	APP CRS 180°M (003°G)	Rwy Idg TDZE 12 Apt Elev 12	4000
-----------------------	---	---	-------------

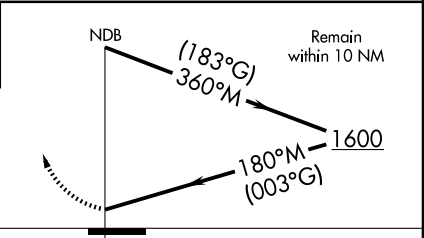
▲ NA

MISSED APPROACH: Climb to 1000, then climbing left turn to 1600 direct PHO NDB and hold.

AWOS-3 118.325	ANCHORAGE CENTER 119.65 363.25	KOTZEBUE RADIO 122.25	CTAF 122.8 0
--------------------------	--	---------------------------------	-------------------------------



1000	1600	PHO
↑	↶	○
		221



CATEGORY	A	B	C	D
S-19	440-1	428 (500-1)	440-1¼ 428 (500-1¼)	440-1½ 428 (500-1½)
CIRCLING	440-1 428 (500-1)	480-1 468 (500-1)	480-1½ 468 (500-1½)	580-2 568 (600-2)

POINT HOPE, ALASKA
Amdt 2 09071

68°21'N-166°48'W

POINT HOPE (PHO) (PAP0)

NDB RWY 19

AK, 22 OCT 2009 to 17 DEC 2009

AK, 22 OCT 2009 to 17 DEC 2009