

BENTON, KANSAS

AL-6683 (FAA)

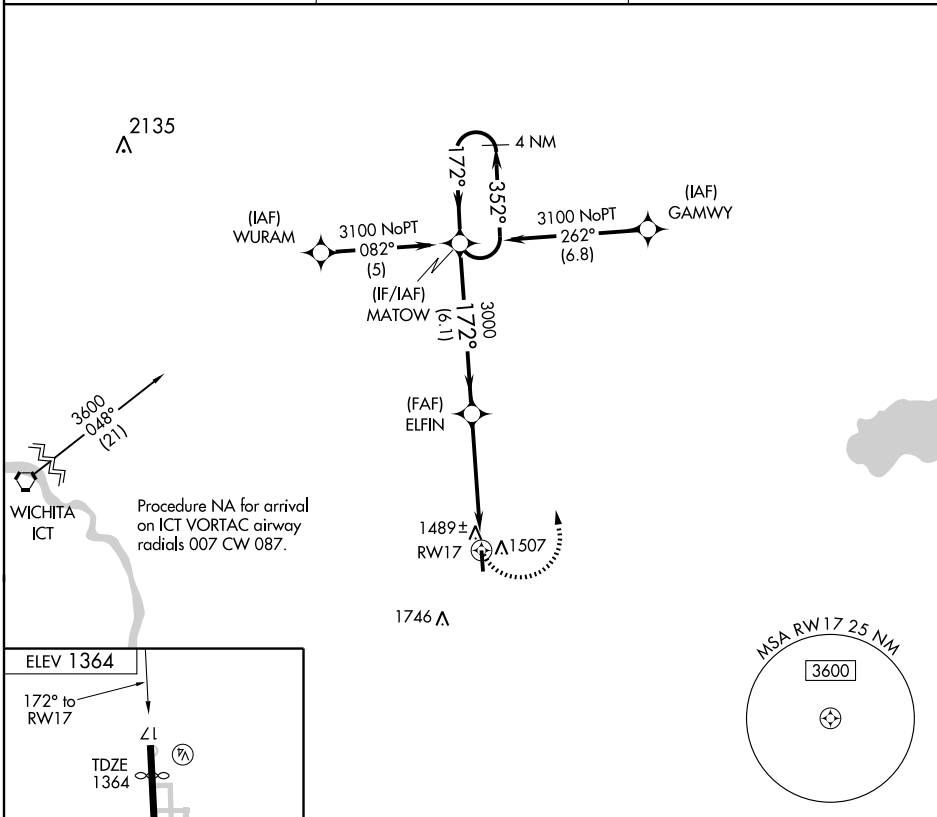
RNAV (GPS) RWY 17

BENTON/LLOYD STEARMAN FIELD (1K1)

APP CRS	Rwy Idg	4350
172°	TDZE	1364
	Apt Elev	1364

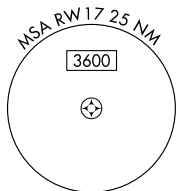
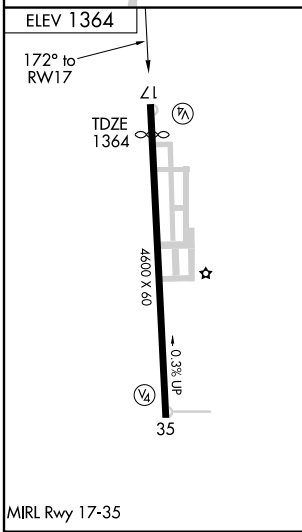
▲ NA DME/DME RNP-0.3 NA. Use Wichita Mid-Continent altimeter setting. MISSED APPROACH: Climbing left turn to 3100 direct MATOW and hold.

WICHITA APP CON 134.8 269.1	CLNC DEL 125.0	UNICOM 123.075 (CTAF)
---------------------------------------	--------------------------	---------------------------------



NC-2, 22 OCT 2009 to 19 NOV 2009

NC-2, 22 OCT 2009 to 19 NOV 2009



4 NM Holding Pattern	MATOW	VGSI and descent angles not coincident.	3100	MATOW
3100	352°	172°	ELFIN	3000
	172°	172°		3.04° TCH 35
				RW17
		6.1 NM	5 NM	
CATEGORY	A	B	C	D
LNAV MDA	1800-1	436 (500-1)	1800-1¼ 436 (500-1¼)	NA
CIRCLING	1920-1	556 (600-1)	1920-1½ 556 (600-1½)	NA

BENTON, KANSAS
Orig 09043

37°47'N-97°07'W

BENTON/LLOYD STEARMAN FIELD (1K1)

RNAV (GPS) RWY 17