

OAKLEY, KANSAS

AL-6682 (FAA)

# RNAV (GPS) RWY 34

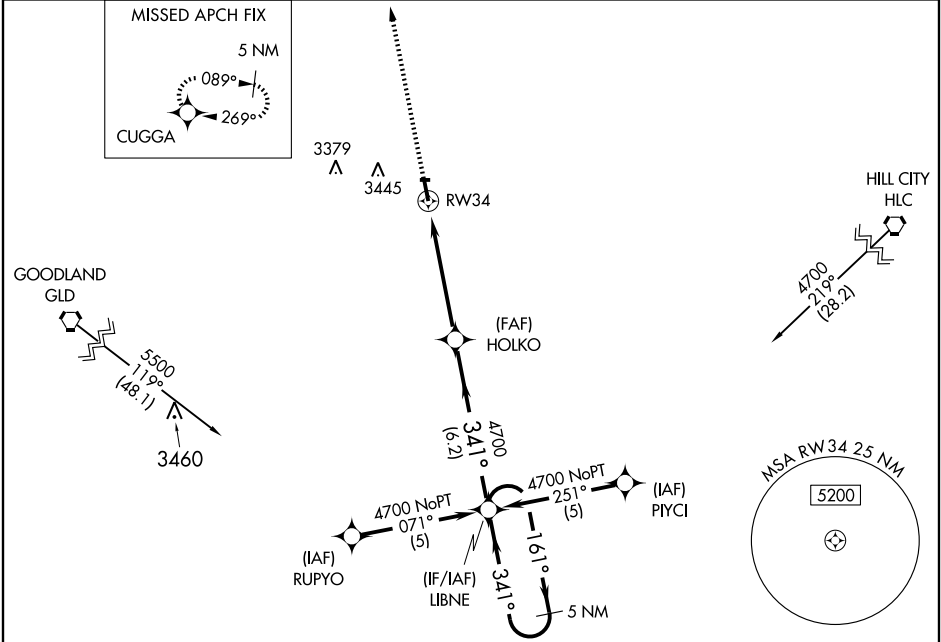
OAKLEY MUNI (OEL)

WAAS CH <b>69500</b> <b>W34A</b>	APP CRS <b>341°</b>	Rwy Idg TDZE Apt Elev	<b>5000</b> <b>3035</b> <b>3045</b>
--	------------------------	-----------------------------	---

**NA** DME/DME RNP-0.3 NA. If local altimeter setting not received, use Renner Field/Goodland Muni altimeter setting and increase all DAs/MDAs 200 feet. Visibility reduction by helicopters NA. For uncompensated BARO-VNAV systems, LNAV/VNAV NA below -21°C (-5°F) or above 42°C (109°F). BARO-VNAV NA when using Renner Field/Goodland Muni altimeter setting.

**MISSED APPROACH:** Climb to 4700 direct CUGGA and hold.

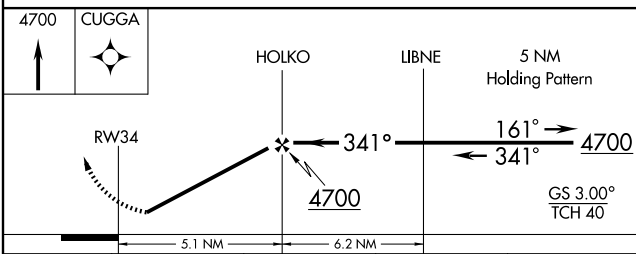
AWOS-3 <b>118.325</b>	DENVER CENTER <b>132.5 379.15</b>	UNICOM <b>122.8 (CTAF) 0</b>
--------------------------	--------------------------------------	---------------------------------



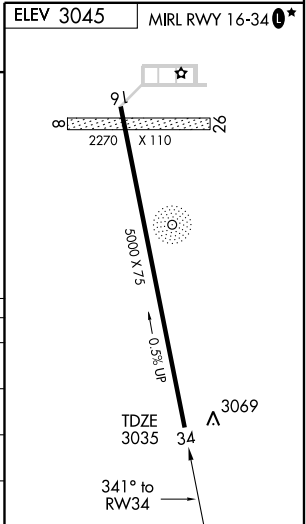
NC-2, 22 OCT 2009 to 19 NOV 2009

NC-2, 22 OCT 2009 to 19 NOV 2009

Procedure NA for arrival at HLC VORTAC on V216 northeast bound.  
Procedure NA for arrival at GLD VORTAC on V132 and V17 northwest bound.



CATEGORY	A	B	C	D
LPV DA	3285-1	250 (300-1)		NA
LNAV/VNAV DA	3472-1½	437 (500-1½)		NA
LNAV MDA	3320-1	285 (300-1)		NA
CIRCLING	3480-1½ 435 (500-1½)	3500-1½ 455 (500-1½)	3800-2¼ 755 (800-2¼)	NA



OAKLEY, KANSAS  
Orig 08045

39°07'N - 100°49'W

# OAKLEY MUNI (OEL)

## RNAV (GPS) RWY 34