

OAKLEY, KANSAS

AL-6682 (FAA)

NDB RWY 34

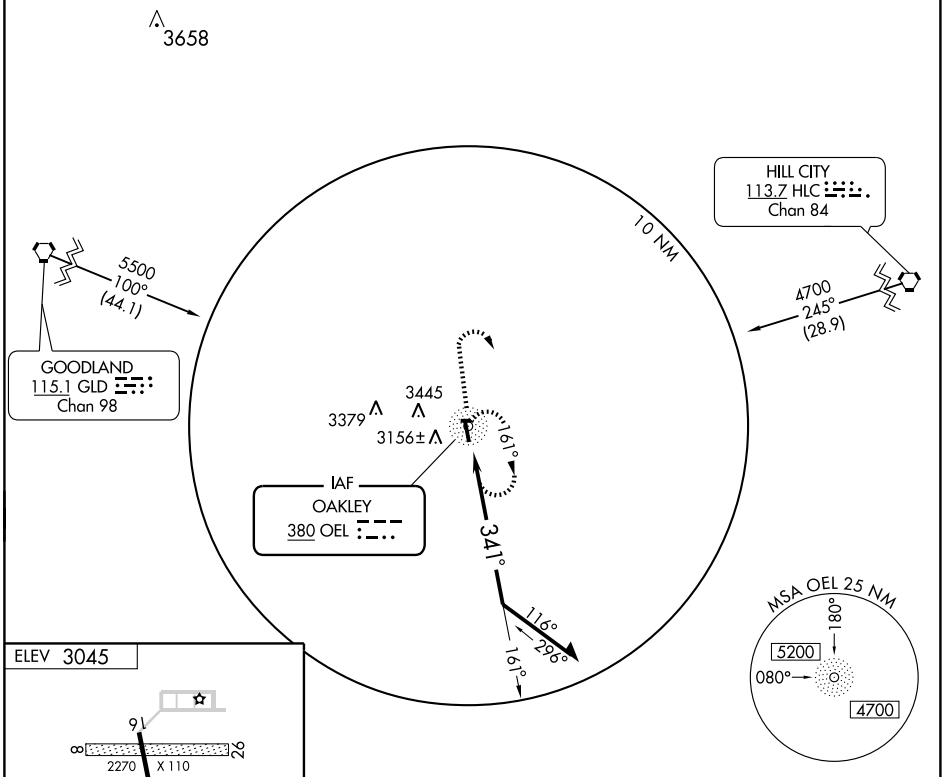
OAKLEY MUNI (OEL)

NDB OEL 380	APP CRS 341°	Rwy Idg TDZE Apt Elev	5000 3035 3045
-----------------------	------------------------	-----------------------------	---

▼ If local altimeter setting not received, use Renner Field/Goodland Muni altimeter setting and increase all MDAs 200 feet. Visibility reduction by helicopters NA.

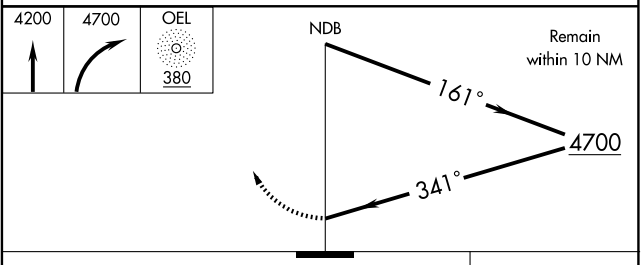
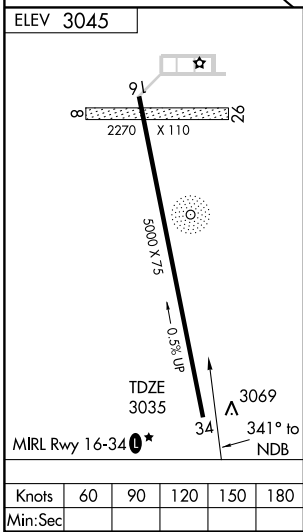
MISSED APPROACH: Climb to 4200, then climbing right turn to 4700 direct OEL NDB and hold.

AWOS-3 118.325	DENVER CENTER 132.5 379.15	UNICOM 122.8 (CTAF) 0
--------------------------	--------------------------------------	---------------------------------



NC-2, 22 OCT 2009 to 19 NOV 2009

NC-2, 22 OCT 2009 to 19 NOV 2009



CATEGORY	A	B	C	D
S-34	3640-1 605 (600-1)		3640-1¾ 605 (600-1¾)	NA
CIRCLING	3640-1 595 (600-1)		3800-2¼ 755 (800-2¼)	NA

OAKLEY, KANSAS
Amdt 3 08045

39°07'N - 100°49'W

OAKLEY MUNI (OEL)

NDB RWY 34