

RNAV (GPS) RWY 35

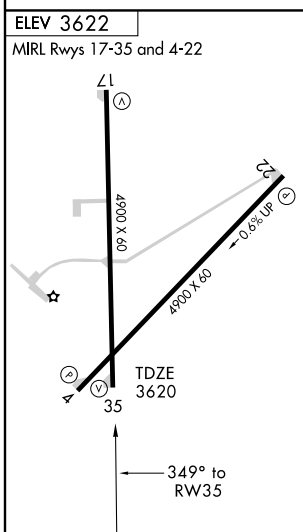
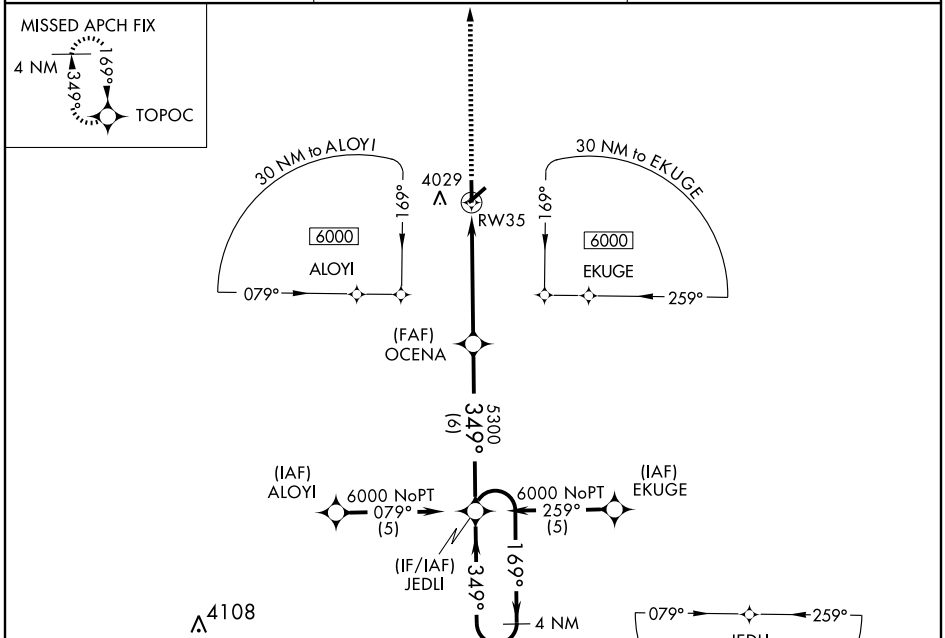
ELKHART-MORTON COUNTY (EHA)

APP CRS 349°	Rwy Idg 4900
	TDZE 3620
	Apt Elev 3622

▽ If local altimeter setting not received, use Liberal altimeter setting and increase all MDAs 220 feet. Procedure NA at night.
▲ NA GPS or RNP-0.3 Required. DME/DME RNP-0.3 NA.

MISSED APPROACH: Climb to 6000 direct TOPOC WP and hold.

AWOS-3 118.025	KANSAS CITY CENTER 134.0 290.8	UNICOM 122.8 (CTAF)
--------------------------	------------------------------------------	-------------------------------



6000	TOPOC	* VDP NA with Liberal altimeter setting.			
↑	☀	JEDLI	4 NM Holding Pattern		
		OCENA			
		RW35	3.05° TCH 44		
			5300		
			169° → 6000		
			← 349°		
			2 NM 3.1 NM 6 NM		
CATEGORY	A	B	C	D	
LNAV MDA	4280-1	660 (700-1)	4280-1¾ 660 (700-1¾)	NA	
CIRCLING	4380-1 758 (800-1)	4380-1¼ 758 (800-1¼)	4380-2¼ 758 (800-2¼)	NA	

NC-2, 22 OCT 2009 to 19 NOV 2009

NC-2, 22 OCT 2009 to 19 NOV 2009