

RNAV (GPS) RWY 22

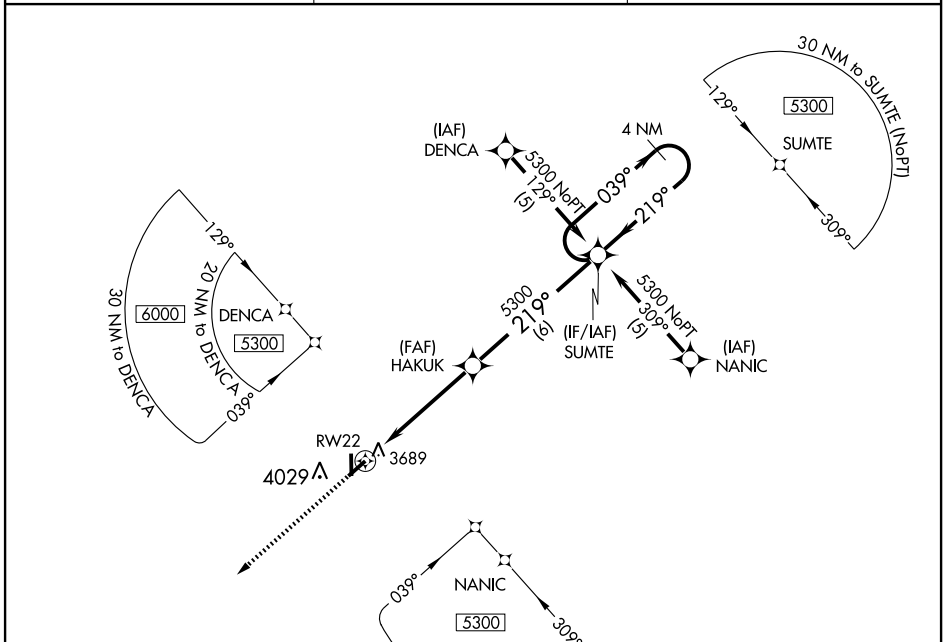
ELKHART-MORTON COUNTY (EHA)

APP CRS 219°	Rwy Idg 4900
	TDZE 3613
	Apt Elev 3622

▼ If local altimeter setting not received, use Liberal altimeter setting and increase all MDAs 220 feet. Procedure NA at night.
▲ NA GPS or RNP-0.3 Required. DME/DME RNP-0.3 NA.

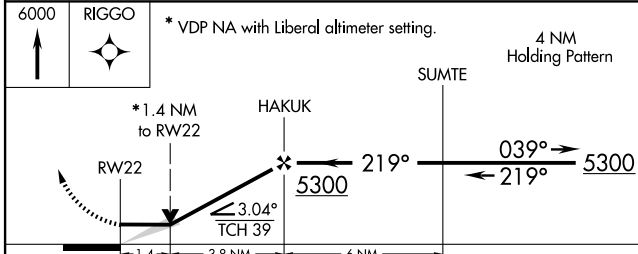
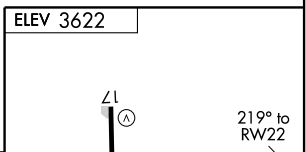
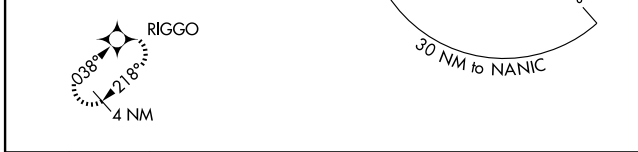
MISSED APPROACH: Climb to 6000 direct RIGGO WP and hold.

AWOS-3 118.025	KANSAS CITY CENTER 134.0 290.8	UNICOM 122.8 (CTAF)
--------------------------	--	-------------------------------



NC-2, 22 OCT 2009 to 19 NOV 2009

NC-2, 22 OCT 2009 to 19 NOV 2009



CATEGORY	A	B	C	D
RNAV MDA	4080-1	467 (500-1)	4080-1½ 467 (500-1½)	NA
CIRCLING	4380-1 758 (800-1)	4380-1½ 758 (800-1½)	4380-2½ 758 (800-2½)	NA

