

# RNAV (GPS) RWY 17

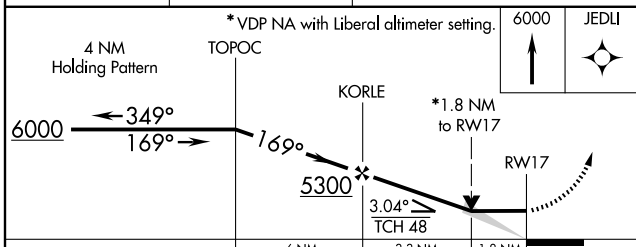
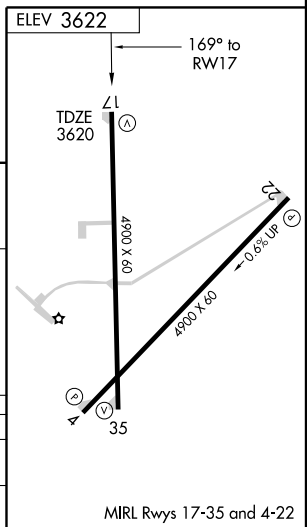
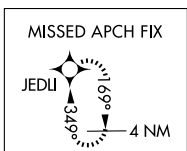
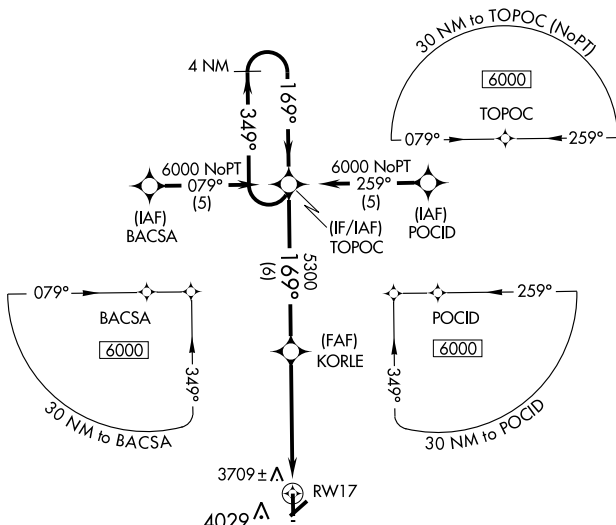
ELKHART-MORTON COUNTY (EHA)

APP CRS <b>169°</b>	Rwy Idg <b>4900</b>
	TDZE <b>3620</b>
	Apt Elev <b>3622</b>

**▼** If local altimeter setting not received, use Liberal altimeter setting and increase all MDAs 220 feet. Procedure NA at night.  
**▲ NA** GPS or RNP-0.3 Required. DME/DME RNP-0.3 NA.

**MISSED APPROACH:** Climb to 6000 direct JEDLI WP and hold.

AWOS-3 <b>118.025</b>	KANSAS CITY CENTER <b>134.0 290.8</b>	UNICOM <b>122.8 (CTAF)</b>
--------------------------	------------------------------------------	-------------------------------



CATEGORY	A	B	C	D
LNVA MDA	4220-1	600 (600-1)	4220-1½ 600 (600-1½)	NA
CIRCLING	4380-1 758 (800-1)	4380-1¼ 758 (800-1¼)	4380-2¼ 758 (800-2¼)	NA

NC-2, 22 OCT 2009 to 19 NOV 2009

NC-2, 22 OCT 2009 to 19 NOV 2009

MIRL Rwy's 17-35 and 4-22